

Powisset Farm Plant Sale 2025

May 9: 3 pm – 6 pm

May 10: 10 am – 3 pm

May 11: 10 am – 3 pm

Price List

2.5" pot: \$5.50

4" pot: \$7.00

Pack of 4: \$5.50

Pack of 6: \$6.50

General Planting Notes:

“Hardening off” is a way to gradually prepare seedlings for planting outdoors. A few days before transplanting outdoors, start setting plants outside during the day for a few hours. At first, set them somewhere with no direct sunlight. Gradually increase the time the plants spend outside, move them to a sunnier area, and decrease the frequency with which they’re watered.

To plant a seedling, push in on the bottom of the plastic pot to pop out the block of soil containing the seedling. If necessary, invert the pot slightly or lightly tug on the stem of the plant to ease it from the tray. Tuck the soil block into a hole in moist soil where you’d like the plant to grow, covering the top of the soil block with soil from the surrounding ground. Many plants, such as tomatoes, appreciate having their entire stem covered up to the first set of leaves; this helps them to establish a strong footing. Some plants, like lettuce, should be planted shallowly so that the tops of their soil plugs line up with the ground.

Specific Plant Requirements (listed for each variety):



Sun levels:

Plants that require full sun should be planted where they receive no shade from surrounding objects for 6+ hours each day. Plants that require part shade should be planted where they receive 4 – 6 hours of sunlight per day.



Spacing:

Adequate distance between plants makes for easier harvest and more access to vital nutrients, space, and light for the plants so that they grow more successfully. Spacing is defined between plants of the same type, as they would be planted in a bed at the farm. Some gardeners have success placing different types of plants together at closer distances, but in those cases it’s important to be mindful that the plants’ nutrient needs and growing styles don’t compete with one another.



Planting dates:

Seedlings are typically planted either after danger of last frost (usually mid May) or once daily temperatures have evened out and reached the 60s – 70s (usually early June). Some more cold-hardy plants can be set out in early or mid May, as they are at lower risk of being damaged by frost. In case of an unexpected drop in temperatures after seedlings are planted, they may be covered with row cover or mulch may be applied around them to increase their chances of survival.



Harvest dates:

Harvest dates are estimated based on the time it takes for each plant to reach maturity and the recommended date of transplanting. Since conditions vary greatly between gardens, it’s important to keep an eye out for signs of ripeness and harvest as soon as plants are ready- for some fast-growing plants like summer squash, the fruits will only be at their peak for a day or two!



Growing notes:

Each plant has different requirements for soil type, tending, and harvest methods. In general, it’s always a good idea to water consistently and deeply, allowing the soil to drain between waterings. A typical garden needs about 1" of water per week, so only irrigate if you don’t get enough rain - overwatering can lead to all sorts of problems including fungal diseases, nutrient imbalance, etc. Adding organic matter like compost to soil is a good way to adjust its texture and pH to make it suitable for most plants; but soils with very high or low pH can also be adjusted with sulphur or agricultural lime (calcium carbonate).



Flowers

Harvesting Flowers:

For long lasting cut flowers, harvest when petals are not fully unfurled; they'll slowly open after harvest.

Drying Flowers:

Some flowers can be dried by hanging them in a well ventilated area outside of direct sunlight. Note that a dried flower will hold the position it's in during drying, so flowers such as amaranth should be dried propped in an upright container to keep their draped appearance.

Staking/Support:

Tall flowers may need to be loosely tied to a stake or trellis as they grow to prevent toppling. Their stems should be secured every 6 – 8 inches. Some other options for supporting flowers include horizontal netting installed about 18" off the ground, or twine strung between stakes about 3 feet off the ground.

Deadheading:

To encourage more flowering and keep flowers from self-seeding, cut off each flower after it has bloomed and has become old or damaged. This should be done a little way down the stalk from the bloom, just above the highest healthy set of leaves.

Perennials:

Perennials can live and grow for multiple years. To overwinter perennials, cut them to the ground and cover them with a layer of mulch. Any flower not marked on this list as a perennial is an annual and will only live for one season. However, some annuals can self-seed and may regrow from dropped seeds the following year. To prevent this, pick all of their flowers before they form seeds. Dahlias are annuals but their tubers can be saved over the winter to replant: in the fall, after plants have died back, cut their stems to 2-4" and dig up tubers, removing excess soil. Let tubers cure for 1-3 days in a warm location with some humidity, out of direct sunlight with ample air flow. Pack tubers in peat or vermiculite inside perforated plastic bags, boxes or crates. Replant the next spring after danger of frost has passed.

Symbol Key



Grows well in containers



Good for cut flower bouquets



Heat tolerant



Cold tolerant



Drought tolerant



Attracts beneficial insects



Fragrant



Easy to grow



Good for drying



Edible



Heirloom



Perennial



Ageratum

Timeless Mix



Long-lasting flower clusters attract bees and butterflies to the garden. Ideal for beds, containers, and cutting.



Full sun or part shade



9 - 12" spacing
24 - 30" height
1 - 2" flower clusters



Plant outside mid May



Blooms July - October



Prefers well drained, fertile soil
Prefers 5.0 - 6.0 pH

Quantity:
(packs of 4)



Amaranth

Garnet Red



Large, beautiful plants with impressive red spires will grow steadily through the summer weather. Edible leaves and seeds.



Full sun



4 - 8" spacing
6 - 8' height
12 - 24" flower spikes



Plant outside mid May



Blooms July - September



Needs staking/support
Prefers well drained soil
Prefers 6.0 - 7.0 pH

Quantity:
(packs of 6)



Amaranth

Hopi Red Dye



Dark red flower heads are smaller and narrower than other amaranth types. Can be used to make a natural red dye. Edible leaves and seeds.



Full sun



4 - 8" spacing
3 - 4' height
12 - 24" flower clusters



Plant outside mid May



Blooms July - September



Needs staking/support
Prefers well drained soil
Prefers 6.0 - 7.0 pH

Quantity:
(packs of 6)



Amaranth

Velvet Curtains



Red, feathery plumes have lovely color and form for late summer and fall arrangements. Edible leaves and seeds.



Full sun



4 - 8" spacing
6 - 8' height
12 - 24" flower spikes



Plant outside mid May



Blooms July - September



Needs staking/support
Prefers well drained soil
Prefers 6.0 - 7.0 pH

Quantity:
(packs of 6)



Amaranth

Hot Biscuits



Well-branched plants with bronze to chestnut plumes are great for autumn bouquets. Edible leaves and seeds.



Full sun



4 - 8" spacing

40 - 48" height

12 - 24" flower spikes



Plant outside mid May



Blooms July - September



Needs staking/support

Prefers well drained soil

Prefers 6.0 - 7.0 pH

Pinch center bud to promote branching

Quantity:

(packs of 6)



Ammi

White Dill



Lacy white flower heads can be dyed an assortment of colors.



Full sun



3 - 12" spacing

36 - 50" height

5 - 6" flower heads



Plant outside mid May



Blooms July - September



Prefers well drained soil
Milky sap may cause skin irritation

Quantity:

(packs of 6)



Artemisia

Sweet Annie



Sweetly aromatic. Fern-like dark green foliage with tiny cream-yellow flowers; great for bouquet fillers, wreaths, and everlasting arrangements.



Full sun



1 - 2' spacing

4 - 6' height



Plant outside mid May



Blooms September



Prefers average soil

Quantity:

(packs of 4)



Asclepias

Soulmate



Also known as pink milkweed. Attracts butterflies and hummingbirds and hosts monarch butterfly larvae.



Full sun



1 - 2' spacing

32 - 48" height



Plant outside mid May



Blooms September - October



Prefers well drained soil
Prefers sandy loam or poor soil
Milky sap may cause skin irritation

Quantity:

(packs of 4)



Aster

King Size Apricot



Double to semidouble, light apricot colored blooms.



Full sun



6 - 12" spacing
34 - 40" height
2.5 - 3" flowers



Plant outside late May/
early June



Blooms July - September



Needs staking/support
Prefers well drained, fertile soil
Prefers 5.5 - 7.5 pH

Quantity:

(packs of 6)



Aster

Tower Mix



All the elegance and beauty of peonies and garden mums in an easy-to-grow annual. 13-20 stems per plant.



Full sun



6 - 12" spacing
28 - 32" height
2 - 3" flowers



Plant outside late May/
early June



Blooms July - September



Needs staking/support
Prefers well drained, fertile soil
Prefers 5.5 - 7.5 pH

Quantity:

(packs of 6)



Aster

Valkyrie Mix



Needle- or quilled-type blooms on long, sturdy stems. Long vase life.



Full sun



6 - 12" spacing
26 - 32" height
3.5 - 5.5" flowers



Plant outside late May/
early June



Blooms July - September



Needs staking/support
Prefers well drained, fertile soil
Prefers 5.5 - 7.5 pH

Quantity:

(packs of 6)



Bachelor's Buttons

Polka Dot



A wonderful cut flower and bedding plant in diverse shades of blue, pink, white and lavender.



Full sun



6 - 9" spacing
16 - 24" height
2" flowers



Plant outside mid May



Blooms June - July



Needs staking/support
Tolerates poor soil
Prefers well drained soil
Prefers cool temperatures
May self-seed and spread

Quantity:

(packs of 6)



Bee Balm

Panorama Red



On their second year, plants produce red blooms with a spicy scent. Edible petals have a minty, spicy flavor; flowers and leaves can be used medicinally.



Full sun or part shade



12 – 18” spacing

30” height

2 – 3” flower heads



Plant outside mid May



Blooms June – August
(second year)



Prefers moist, rich soil
Prefers 6.0 – 7.0 pH

Quantity:
(packs of 4)



Bee Balm

Wild Bergamot



On their second year, plants produce lavender blooms with a spicy scent. Edible petals have a minty, spicy flavor; flowers and leaves can be used medicinally.



Full sun or part shade



12 – 18” spacing

36 – 48” height

2 – 3” flower heads



Plant outside mid May



Blooms June – August
(second year)



Prefers moist, rich soil
Prefers 6.0 – 7.0 pH

Quantity:
(packs of 4)



Calendula

Alpha



High resin content for medicinal use. Also edible; remove the petals from the flower base before consuming as the base can be bitter.



Full sun or part shade



6 - 12” spacing

24 – 30” height

2 – 3.5” flowers



Plant outside mid May



Blooms June - October



Prefers well drained, fertile soil
Prefers cool temperatures

Quantity:
(packs of 4)



Calendula

Flashback Mix



The undersides of the petals are a muted burgundy. Petals are edible; remove the petals from the flower base before consuming as the base can be bitter.



Full sun or part shade



6 - 12” spacing

18 - 24” height

1.5 - 3” flowers



Plant outside mid May



Blooms June – October



Prefers well drained, fertile soil
Prefers cool temperatures

Quantity:
(packs of 4)



Campanula

Blue Clips



Masses of light azure bellflowers dance above a tidy mound of foliage; great at the front of garden beds or in containers.



Full sun or part shade



12" spacing
8" height
2.5" flowers



Plant outside mid May



Blooms June – October



Prefers moist, well drained soil
Deadhead spent flowers

Quantity:
(packs of 6)



Celosia

Chief Mix



Sturdy plants with strong stems. Also known as cockscomb.



Full sun



6 - 12" spacing
36 - 40" height
3 - 5" flowers



Plant outside mid May



Blooms August - September



Prefers well drained, fertile soil
Prefers moist soil
Prefers 6.0 - 7.0 pH

Quantity:
(packs of 6)



Celosia

Flamingo Feather



Easy-to-grow, pale pink and rose spikes have a silvery shimmer.



Full sun



6 - 12" spacing
24 - 36" height
2 - 3" flower spikes



Plant outside mid May



Blooms August - September



Prefers well drained, fertile soil
Prefers moist soil
Prefers 6.0 - 7.0 pH

Quantity:
(packs of 6)



Celosia

Pampas Plume



Masses of soft, feathery plumes make a perfect bouquet filler. Multi-branching plants produce 10-14 stems each.



Full sun



6 - 12" spacing
33 - 48" height
2 - 6" flower spikes



Plant outside mid May



Blooms August - September



Prefers well drained, fertile soil
Prefers moist soil
Prefers 6.0 - 7.0 pH

Quantity:
(packs of 6)



Celosia

Ruby Parfait



Dark rose flower spikes on full, branching plants are long-lasting and sturdy in bouquets or boutonnières.



Full sun



6 - 12" spacing
24 - 26" height
2 - 3" flower spikes



Plant outside mid May



Blooms August - September



Prefers well drained, fertile soil
Prefers moist soil
Prefers 6.0 – 7.0 pH

Quantity:

(packs of 6)



Celosia

Supercrest Mix



Each shiny, fan shaped bloom is a distinctive work of art, with an individual texture, color and shape all its own. Will produce blooms all season long.



Full sun



12 - 18" spacing
36 - 48" height
2 - 5" flower spikes



Plant outside mid - late May



Blooms August - September



Prefers well drained, fertile soil
Prefers 6.0 – 7.0 pH

Quantity:

(packs of 6)



Columbine

European Columbine



Spurless blossoms appear the second year and are mostly pink, with a few purples and whites. Leaves remain green through the season.



Full sun or partial shade



15 - 18" spacing
18 - 30" height
2.5" flowers



Plant outside mid May



Blooms May - June
(second year)



Prefers moist, well drained soil

Quantity:

(packs of 4)



Coreopsis

Dyer's Coreopsis



Native, beautiful, and useful for dyeing various colors.



Full sun



12 - 18" spacing
2 - 4' height
1.5" flowers



Plant outside mid May



Blooms June - September



Tolerates poor soil
May reseed and spread

Quantity:

(packs of 6)



Cosmos

Double Click



Tall plants with large, fully-double and semidouble blooms in a range of colors.



Full sun



9 - 12" spacing
42 - 46" height
1.5 - 2.5" flowers



Plant outside mid May



Blooms July - September



Tolerates poor soil
Deadheading recommended
May need wind protection
May self-seed and spread

Quantity:

(packs of 6)



Cosmos

Sensation Mix



Sensational blend of showy white, pink, magenta and lavender blooms. Tall stems great for cutting.



Full sun



9 - 12" spacing
3 - 4' height
3 - 4" flowers



Plant outside mid May



Blooms July - September



Tolerates poor soil
Deadheading recommended
May need wind protection
May self-seed and spread

Quantity:

(packs of 6)



Dahlia

Giant Hybrid



A mix of double, semidouble, and single blooms; both solid and bicolor. Both flowers and tubers are edible; mild-flavored flowers are great as garnish.



Full sun



9 - 12" spacing
40 - 60" height
3 - 5" flowers



Plant outside early - mid June



Blooms August - October



Tubers can be saved over winter

Quantity:

(packs of 4)



Dianthus

Chabaud Orange Sherbet



French heirloom carnations with a sweet fragrance. Edible petals taste of mild clove. Remove petals from the flower base before consuming as the base can be bitter.



Full sun



6" spacing
24 - 30" height
1.5 - 2" flowers



Plant outside mid May



Blooms July - August



Prefers rich, well-drained soil
Prefers cool temperatures
Prefers slightly alkaline soil

Quantity:

(packs of 4)



Dianthus

Volcano Mix



Blooms have a sweet fragrance.
Edible petals taste of mild clove.
Remove petals from the flower base
before consuming as the base can be
bitter.



Full sun



6" spacing
16 - 24" height
2 - 4.5" flower clusters



Plant outside mid May



Blooms June - August



Prefers rich, well-drained soil
Prefers cool temperatures
Prefers slightly alkaline soil

Quantity:
(packs of 4)



Echinacea

Purpurea



Also known as purple coneflower,
this native perennial attracts
pollinators and has medicinal uses.
Expect blooms the second year.



Full sun or partial shade



18 - 24" spacing
24 - 36" height
3 - 4.5" flowers



Plant outside early June

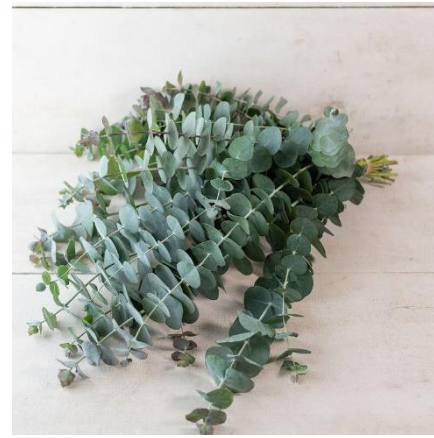


Blooms July - October
(second year)



Prefers well-drained soil

Quantity:
(packs of 4)



Eucalyptus

Baby Blue



Classic florists' eucalyptus with
column-like, sturdy stems and waxy,
silver-blue leaves.



Full sun



1 - 2' spacing
3 - 4' height
2" leaves



Plant outside mid May



Harvest September, or when
leaves feel leathery and stems
woody



Prefers fertile, well-drained soil

Quantity:
(packs of 6)



Gomphrena

Quality in Seed Mix



Beautiful mix of long-lasting globe
shaped flowers. Plants grow into a
dense, bush habit which makes for
easy maintenance.



Full sun



6 - 8" spacing
18 - 28" height
1.5" flowers



Plant outside mid May



Blooms July - October



Prefers well-drained soil

Quantity:
(packs of 6)



Ornamental Grasses

Feathertop



Masses of white, wooly, nodding plumes on graceful plants forming 12" clumps.



Full sun



12 – 18" spacing
1 – 2' height
6" plumes



Plant outside mid May



Blooms September - October



Prefers average or porous soil

Quantity:

(packs of 6)



Ornamental Grasses

Frosted Explosion



Airy flower plumes add sparkle to bouquets and landscapes. A productive filler for bouquets, and a carefree bedding plant.



Full sun



10 - 12" spacing
24 – 32" height
6 - 10" flower spikes



Plant outside mid May



Blooms August - October



Prefers well-drained soil

Quantity:

(packs of 6)



Gypsophila

Covent Garden Market



Also known as baby's breath.
Standard filler for arrangements.



Full sun



8" spacing
18 – 24" height
0.5 – 0.75" flowers



Plant outside mid May



Blooms July



Prefers relatively poor soil

Quantity:

(packs of 4)



Marigold

Coco Gold



Sturdy plants produce abundant, fully double blooms useful for marigold garlands. Edible petals have hints of citrus and spice, and are slightly bitter.



Full sun



12 - 18" spacing
36 - 42" height
2.5 - 3" flowers



Plant outside mid May



Blooms June - October



Deadheading recommended
Prefers moderately fertile soil
Growth stalls in very high heat
Prefers 6.0 – 7.5 pH

Quantity:

(packs of 4)



Marigold

Queen Sophia



Dark orange petals rimmed with gold. Edible petals and leaves have hints of citrus and spice, and are slightly bitter.



Full sun



8 – 12" spacing
10 – 12" height
2.5 – 3" flowers



Plant outside mid May



Blooms July - October



Deadheading recommended
Prefers moderately fertile soil
Growth stalls in very high heat
Prefers 6.0 – 7.5 pH

Quantity:

(packs of 4)



Marigold

Coco Gold



Sturdy plants produce abundant, fully double blooms useful for marigold garlands. Edible petals have hints of citrus and spice, and are slightly bitter.



Full sun



12 - 18" spacing
36 - 42" height
2.5 - 3" flowers



Plant outside mid May



Blooms July - October



Deadheading recommended
Prefers moderately fertile soil
Growth stalls in very high heat
Prefers 6.0 – 7.5 pH

Quantity:

(packs of 4)



Nasturtium

Dwarf Jewel Blend



A beautiful border plant with a spreading habit. Peppery edible leaves and flowers can be stuffed with cream cheese or added to salads.



Full sun or partial shade



16" spacing
1 – 2' height
2" flowers



Plant outside mid May



Blooms July - September



Prefers well drained soil
Trellis if growing vertically
Avoid excess nitrogen

Quantity:

(packs of 6)



Nigella



Also known as love-in-a-mist. Jewel-like, blue flowers bring an old-fashioned charm to bouquets and attract pollinators. Seed pods can be dried for ornamental arrangements.



Full sun



2 – 9" spacing
20 – 28" height
1.5" flowers



Plant outside mid May



Blooms July - August



Prefers well-drained soil

Quantity:

(packs of 6)



Nigella

Cramer's Plum



Doubled, white blooms with varying purple centers. Plum purple, stripe-free seed pods can be dried for ornamental arrangements.



Full sun



2 - 9" spacing
20 - 28" height
1.5 - 2" flowers



Plant outside mid May



Blooms July – August



Prefers well-drained soil



Orlaya

White Finch



Elegant filler flowers with an intricate, lacy pattern. Clusters of green star-shaped seed pods are beautiful in bouquets.



Full sun



9 - 12" spacing
24 - 30" height
2.5 - 3.5" flowers



Plant outside mid May



Blooms July - September



May need staking/support
Prefers well-drained soil



Poppy

Black Beauty



A combination of double flowers and single petal blooms. Self-seeding annual – will return the following year.



Full sun



6 - 12" spacing
3 - 4' height
3 - 5" flowers



Plant outside mid May



Blooms July – September
(then spring of second year)



Prefers poor, well-drained soil
May self-seed and spread



Poppy

California Orange



Simple, silky orange flowers accented by wispy blue-green foliage. A California wildflower and self-seeding annual.



Full sun



6" spacing
8 - 12" height
2 - 3" flowers



Plant outside mid May



Blooms July – September
(then spring of second year)



Prefers poor, well-drained soil
May self-seed and spread

Quantity:

(packs of 6)

Quantity:

(packs of 6)

Quantity:

(packs of 4)

Quantity:

(packs of 4)



Poppy

Single Red Corn



Traditional European corn poppy with lovely, pale red, single flowers. Self-seeding annual – will return the following year.



Full sun



6" spacing
19 – 25" height
3 – 5" flowers



Plant outside mid May



Blooms July – September
(then spring of second year)



Prefers poor, well-drained soil
May self-seed and spread

Quantity:
(packs of 4)



Rudbeckia



Easy to grow, vigorous plants offer seemingly endless blooms over a long harvest window. Stems are multi-branching and sturdy.



Full sun or part shade



18 - 24" spacing
32 - 46" height
4 - 6" flowers



Plant outside mid May



Blooms July - September



Prefers moderately fertile soil
May self-seed and spread

Quantity:
(packs of 4)



Rudbeckia

Tritoba



Native perennial makes an excellent bouquet filler. Also known as Brown-eyed Susan.



Full sun or part shade



18 – 24" spacing
48 – 60" height
1.5 – 2.5" flowers



Plant outside mid May



Blooms August - October



May self-seed and spread

Quantity:
(packs of 4)



Scabiosa

Pincushion Mix



Elegant flowers on strong, slender stems.



Full sun



9 - 15" spacing
24 - 36" height
1.5 – 2.5" flowers



Plant outside mid May



Blooms July - October



Needs staking/support
Prefers rich, well-drained soil
May self-seed and spread

Quantity:
(packs of 4)



Snapdragon

Chantilly Light Salmon



Open-faced flowers are edible but bitter.



Full sun or part shade



4 – 12” spacing
28 – 36” height
5 - 9” flower spikes



Plant outside mid May



Blooms September – October



Prefers rich, well-drained soil
Prefers moist soil
Prefers pH neutral soil

Quantity:
(packs of 4)



Snapdragon

Lion’s Mouth Blend



Gorgeous blend of bold and pastel colored flowers bloom continuously through the summer, especially with trimming. Edible but bitter.



Full sun or part shade



8 - 10” spacing
12 - 24” height
5 - 9” flower spikes



Plant outside mid May



Blooms June – July,
September - October



Prefers rich, well-drained soil
Prefers moist soil
Prefers pH neutral soil

Quantity:
(packs of 4)



Snapdragon

Madame Butterfly Bronze



“Azalea-type,” double-petaled fluffy blooms create a Victorian look.
Edible but bitter.



Full sun or part shade



4 – 12” spacing
26 – 36” height
5 - 9” flower spikes



Plant outside mid May



Blooms September - October



Prefers rich, well-drained soil
Prefers moist soil
Prefers pH neutral soil

Quantity:
(packs of 4)



Statice

Pastel Mix



Productive plants with strong stems.
Long-lasting when cut, and yields multiple cuts throughout the season.
Easy to dry and holds its color well.



Full sun



12” spacing
24 - 30” height
1.5 - 3” flower clusters



Plant outside mid May



Blooms July - September



Prefers rich, well-drained soil

Quantity:
(packs of 6)



Strawflower

Apricot/Peach Mix



Profuse bloomers for fresh or dried arrangements.



Full sun



10 – 12” spacing
36 – 40” height
2 – 2.5” flowers



Plant outside mid May



Blooms July - October



Deadheading recommended
May need staking/support
Prefers moderately fertile soil
Prefers well-drained soil

Quantity:

(packs of 6)



Strawflower

Monstrosum Tall Mix



Vigorous mix of brilliant flowers on tall, sturdy stems.



Full sun



10 - 12” spacing
36 - 40” height
1.5 - 3” flowers



Plant outside mid May



Blooms July - October



Deadheading recommended
May need staking/support
Prefers moderately fertile soil
Prefers well-drained soil

Quantity:

(packs of 6)



Strawflower

Roggli Riesen



Bright and varied colorful flowers on tall plants offer texture and color for many months after harvest. Flowers are best cut when they are in bud.



Full sun



12 - 18” spacing
30 - 36” height
2 – 2.5” flowers



Plant outside mid May



Blooms July - October



Deadheading recommended
May need staking/support
Prefers moderately fertile soil
Prefers well-drained soil

Quantity:

(packs of 6)



Strawflower

Vintage White



Tall, well-branched plants produce many pure white, double flowers.



Full sun



10 - 12” spacing
36 – 40” height
2 – 2.5” flowers



Plant outside mid May



Blooms July - October



Deadheading recommended
May need staking/support
Prefers moderately fertile soil
Prefers well-drained soil

Quantity:

(packs of 6)



Sunflower

Autumn Beauty



Tall, branching plants with flowers reminiscent of autumn leaves. Flower buds can be fried and bittersweet-tasting petals used in salads.



Full sun



18 – 24” spacing
96 – 120” height
8” flowers



Plant outside mid May



Blooms July – September



Prefers light, well drained soil
Avoid excess nitrogen

Quantity:

(packs of 6)



Sunflower

Evening Colors



Well-branched plants. Gold and pale yellow flowers have dusty rose to pink rings.



Full sun



9 – 24” spacing
8’ height
6” flowers



Plant outside mid May



Blooms August – September



Prefers light, well drained soil
Avoid excess nitrogen

Quantity:

(packs of 6)



Sunflower

Evening Sun



Multi-branching plants produce plenty of blooms in sunset hues with many bicolor blends.



Full sun



12” spacing
8’ height
3 – 5” flowers



Plant outside mid May



Blooms July – September



Prefers light, well-drained soil
Avoid excess nitrogen

Quantity:

(packs of 6)



Sunflower

Goldy Double



Branching plants produce fully double blooms with green-to-yellow centers. Minimal pollen.



Full sun



18 – 24” spacing
60 – 72” height
5 – 7” flowers



Plant outside mid May



Blooms August – September



Prefers light, well-drained soil
Avoid excess nitrogen

Quantity:

(packs of 6)



Sunflower

Mammoth



Giant, fast-growing sunflowers with edible seeds.



Full sun



9 – 24" spacing

12' height

10 – 12" flowers



Plant outside mid May



Blooms September



Prefers light, well drained soil

Quantity:

(packs of 6)



Sunflower

Selma Suns



Polyheading blooms. Heads have small dark centers, pointed petals, and display various hues and shades; many are multicolored.



Full sun



12" spacing

6 – 7' height

6" flowers



Plant outside mid May



Blooms July – September



May self-seed and spread

Quantity:

(packs of 6)



Sunflower

Solano Double



Single-stem, double “teddy bear” type blooms.



Full sun



4 - 6" spacing

50 – 60" height

4 - 7" flowers



Plant outside mid May



Blooms July – September



Prefers light, well-drained soil

Avoid excess nitrogen

Quantity:

(packs of 6)



Sunflower

Zohar



Uniform, pollenless, single-stem sunflower.



Full sun



4 – 6" spacing

48 – 60" height

4 – 6" flowers



Plant outside mid May



Blooms July – September



Prefers light, well-drained soil

Avoid excess nitrogen

Quantity:

(packs of 6)



Tithonia



Vigorous and full plant blooms well into fall, providing nectar and habitat to beneficial insects.



Full sun



12 - 24" spacing
60 - 72" height
3 - 3.5" flowers



Plant outside early - mid June



Blooms July - October



Deadheading recommended
Prefers fertile loam or sandy soil
Prefers well-drained soil
Tolerates poor, dry soil
Avoid excess nitrogen

Quantity:

(packs of 6)



Wallflower

Siberian



Biennial with spice-scented orange blossoms.



Full sun or partial shade



10 - 12" spacing
9 - 12" height
0.5 - 1" flowers



Plant outside mid May



Blooms July - October
(then all season in second year)



Deadheading recommended
Prefers well-drained soil
Tolerates up to 9.0 pH

Quantity:

(packs of 4)



Yarrow

Favorite Berries



Long-lasting perennial in a blend of pastel hues. Plants have decorative, fern-like foliage.



Full sun or partial shade



12 - 24" spacing
28 - 30" height
2 - 4" flower heads



Plant outside mid May



Blooms September
(then June - September the following year)



May need staking/support
Prefers well-drained soil

Quantity:

(packs of 6)



Yarrow

Flowerburst Red Shades



Long-lasting perennial in red, rose, and lavender shades. Plants have decorative, fern-like foliage.



Full sun or partial shade



12 - 24" spacing
28 - 30" height
2 - 4" flower heads



Plant outside mid May



Blooms September
(then June - September the following year)



May need staking/support
Prefers well-drained soil

Quantity:

(packs of 6)



Zinnia

Cactus Flowered Mix



Large blooms with quilled petals. Cut-and-come-again flower, yielding multiple cuts over the season.



Full sun



9 - 12" spacing
28 - 40" height
3 - 6" flowers



Plant outside mid May



Blooms July - October



Deadheading recommended
Prefers rich soil
Prefers 6.3 - 6.8 pH

Quantity:

(packs of 6)



Zinnia

County Fair Blend



Blooms until frost; heat and disease tolerant. Keep cut flowers out of direct sunlight and change the water in the vase every two days.



Full sun



9 - 12" spacing
24 - 36" height
2 - 5" flowers



Plant outside mid May



Blooms July - October



Deadheading recommended
Prefers rich soil
Prefers 6.3 - 6.8 pH

Quantity:

(packs of 6)



Zinnia

Jazzy Mix



Compact plants produce many petite double and semidouble blooms. Plants yield multiple cuttings of flowers over the season.



Full sun



9 - 12" spacing
20 - 26" height
1 - 2" flowers



Plant outside mid May



Blooms July - October



Deadheading recommended
Prefers rich soil
Prefers 6.3 - 6.8 pH

Quantity:

(packs of 6)



Zinnia

Jim Baggett's Choice Mix



Diverse mix with dahlia-flowered and cactus-flowered blooms in double and semidouble form. Plants yield multiple cuttings of flowers over the season.



Full sun



9 - 12" spacing
28 - 38" height
4 - 5" flowers



Plant outside mid May



Blooms July - October



Deadheading recommended
Prefers rich soil
Prefers 6.3 - 6.8 pH

Quantity:

(packs of 6)



Zinnia

Queeny Lime with Blotch



A mix of single and double blooms. Flowers are light yellow with fuchsia centers; occasional blooms have a pink blush across the petals.



Full sun



9 – 12” spacing
30 – 34” height
2 – 2.5” flowers



Plant outside mid May



Blooms July - October



Deadheading recommended
Prefers rich soil
Prefers 6.3 – 6.8 pH

Quantity:

(packs of 6)



Zinnia

Queeny Lime Orange



Mostly double and semidouble blooms with a small percentage of singles. Plants yield multiple cuttings of flowers over the season.



Full sun



9 – 12” spacing
30 – 40” height
2 – 3.5” flowers



Plant outside mid May



Blooms July - October



Deadheading recommended
Prefers rich soil
Prefers 6.3 – 6.8 pH

Quantity:

(packs of 6)



Zinnia

Queeny Lime Red



Flowers are mostly ‘antique’ pink in color, with some pale green tones, pink highlights, and dark pink centers. A mix of single and double flowers.



Full sun



9 – 12” spacing
30 – 38” height
1.75 – 2.75” flowers



Plant outside mid May



Blooms July - October



Deadheading recommended
Prefers rich soil
Prefers 6.3 – 6.8 pH

Quantity:

(packs of 6)



Zinnia

State Fair Mix



Vigorous plants with large dahlia-type, double and semidouble blooms. Plants yield multiple cuttings of flowers over the season.



Full sun



9 – 12” spacing
36 – 46” height
3 – 5” flowers



Plant outside mid May



Blooms July - October



Deadheading recommended
Prefers rich soil
Prefers 6.3 – 6.8 pH

Quantity:

(packs of 6)



Herbs

Perennial Herbs:

Many herbs can last multiple seasons if properly cared for and overwintered. As a general rule, harvest perennial herbs sparingly the first year, taking only a few leaves or the tips of sprigs. In later years, the plant can be harvested by cutting entire sprigs a few inches from the ground. After 2-4 years, perennial herbs may grow woody and can be replaced. Especially delicate perennials such as rosemary should be given extra protection during the winter by cutting the entire plant down to a few inches above the ground and covering the stub with 4-6 inches of mulch.

Harvesting Herbs:

The harvest season of many herbs can be prolonged by harvesting regularly before the plants are able to bloom. In some cases the entire plant is cut down to near ground level; for a more delicate harvest, stems should be pinched off just above a large, healthy set of leaves.

Drying Herbs:

Some herbs, such as sage, can be dried by hanging small bundles upside down in a well ventilated area outside of direct sunlight.

Symbol Key



Grows well in containers



Good for cut flower bouquets



Attracts beneficial insects



Fragrant



Easy to grow



Good for drying



Basil

Prospera



Fast-growing, classic Genovese basil with 3" long glossy leaves. Do not refrigerate harvested basil.



Full sun



4 - 8" spacing
20 - 24" height



Plant outside mid May



Harvest July - October



Moderately rich, moist soil
Water regularly
Begin light harvesting in cool morning temperatures, after plants are established
Just before flowering, cut entire plant 4-6" above ground for second growth

Quantity:
(2.5" pots)



Basil

Red Rubin



Dark purple Italian Large Leaf type (3" leaves) with high yields and great flavor. Flowers and leaves make an attractive garnish. Do not refrigerate harvested basil.



Full sun



4 - 8" spacing
18 - 24" height



Plant outside mid May



Harvest July - October



See growing notes for Prospera basil at left

Quantity:
(2.5" pots)



Basil

Sweet Thai



Intense, spicy basil flavor with notes of clove and anise. Flowers can be eaten like leaves or used for garnish. Do not refrigerate harvested basil.



Full sun



4 - 8" spacing
16 - 20" height



Plant outside mid May



Harvest July - October



See growing notes for Prospera basil at left

Quantity:
(2.5" pots)



Borage



Large plants bear hundreds of edible cucumber-flavored flowers, mostly blue and some pink. Add flowers to salads, use as garnish, or freeze in ice cubes.



Full sun



12" spacing
18 - 30" height
1" flowers



Plant outside mid May



Harvest July - October



Tolerates poor soil
May self-seed and spread

Quantity:
(packs of 4)



Cilantro



Like the leaves and seeds, the flowers are also edible. If allowed to flower, provides pollen and nectar for beneficial insects.



Full sun



3" spacing
12 - 18" height



Plant outside mid May



Harvest leaves June - July;
seeds August - October



Prefers rich, well drained soil
Harvest leaves once plants are established, before flowering.
Harvest seeds fresh as they form, or when brown and dry.

Quantity:

(2.5" pots)



Chamomile

Common



Tea made from the flowers aids digestion and acts as a gentle sleep inducer. Also edible as garnish; slightly sweet.



Full sun



8" spacing
15 - 24" height
0.5 - 1" flowers



Plant outside mid May



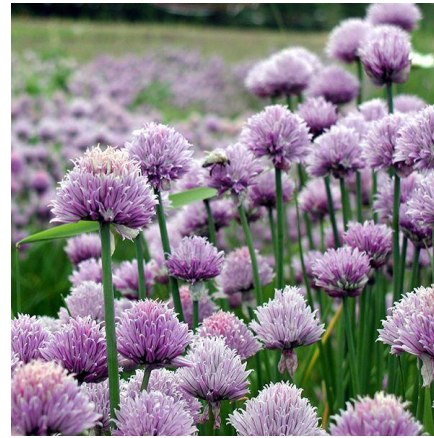
Blooms June - October



Prefers well drained, fertile soil
Prefers sandy loam
May self-seed and spread

Quantity:

(packs of 6)



Chives



Quick growing, medium to full-size leaves and edible flowers excellent for dressing up soups or as a garnish.



Full sun or part shade



4 - 8" spacing
12 - 18" height
1" flowers



Plant outside mid May



Harvest June - October



Prefers rich, high humus soil
Cut to ground level to harvest
Hardy as a perennial

Quantity:

(2.5" pots)



Dill

Bouquet



Large, early blooms on long stems are great for cut-flower use and pickling. Flowers can be used as garnish or broken into florets and mixed into foods as seasoning.



Full sun



2 - 4" spacing
30" height
6" flower umbels



Plant outside mid May



Harvest leaves June - July;
seeds August - October



Tolerates poor soil
Prefers rich, light soil

Quantity:

(2.5" pots)



Lavender

Ellagance Purple



Winter hardy plants. Edible flowers' sweet flavor pairs well with citrus, berries, nuts, mint, and cinnamon.



Full sun



12 - 18" spacing
12 - 18" height
2" flower spikes



Plant outside mid May



Blooms July - August



Prefers 6.5 - 8.3 pH
Gravelly, light, well-drained soil
Protected, south facing area
Plant shallowly
Cut back and mulch in fall

Quantity:

(2.5" pots)



Oregano

Greek



Strong aroma and flavor. Dark green leaves, with white flowers that can be eaten like the leaves.



Full sun or part shade



12" spacing
8 - 24" height



Plant outside mid - late May



Harvest August - October



Prefers well drained, sandy soil
Cut 2" above base of plant to harvest; harvest stems just as they begin blooming
Multiple harvests per season
Hardy as a perennial

Quantity:

(2.5" pots)



Parsley

Giant of Italy



The preferred culinary variety. Huge, dark green leaves on strong, upright stems. Very high yielding.



Full sun



8 - 12" spacing
18 - 20" height



Plant outside mid - late May



Harvest August - October



Prefers moist, fertile soil
Can be overwintered for an early spring harvest
Harvest leaves as needed

Quantity:

(2.5" pots)



Rosemary



Pine-scented, savory, culinary favorite. Silvery, needle-like foliage and delicate flowers that can be eaten fresh for garnish.



Full sun



8 - 10" spacing if grown as an annual; 24 - 36" perennial
18 - 60" height



Plant outside mid May



Harvest August - October



Prefers light, well drained soil
Hardy as a perennial if mulched
Harvest stem tips at first, then cut whole sprigs once mature

Quantity:

(2.5" pots)



Sage



Dusty, green leaves are used for seasoning and make a good base for dried floral wreaths. Edible flowers.



Full sun or part shade



12" spacing
16 – 30" height



Plant outside mid May



Harvest August - October



Prefers sufficient nitrogen
Prefers well drained soil
Hardy as a perennial
Harvest individual leaves during the first year; in later years, cut stems 6" from base as flowers start to open

Quantity:

(2.5" pots)



Thyme

German Winter



Good flavor and yield. Edible flowers.



Full sun or part shade



6 - 8" spacing
6 – 12" height



Plant outside mid May



Harvest September - October



Light, dry, well drained soil
Hardy as a perennial
Harvest only a few stems the first year; in later years, cut stems 4 - 5" from base as flowers start to open

Quantity:

(2.5" pots)



Peppers

Mulching Peppers:

Peppers prefer warm soil, which can be achieved early in the season with a dark mulch such as black plastic or landscape fabric. Other mulches may be applied once soil temperatures have warmed up, as they may limit soil's ability to warm up quickly in the spring. Mulch will also help the soil stay moist.

Watering Peppers:

Peppers should be watered regularly (aim for 1" of water per week, including any rainfall), but caution should be taken to avoid letting the leaves of the plants stay wet for long periods of time. Using drip irrigation or watering in the morning can help.

Harvesting Peppers:

If harvesting peppers green, they should be picked when they reach the desired size; if another color is the goal, wait until the peppers have fully colored on the plant before picking. Peppers can be gently pulled at an angle so that they snap off at the stem. Note that some hot peppers, like Padron, will be mild up to a certain size, then turn hot- so be sure to pick them at the desired stage!

Heirlooms:

This year, we are excited to be using seeds sustainably grown by [Sistah Seeds](#) for all of our heirloom hot peppers except Padron. Sistah Seeds is a Pennsylvania seed company working to regenerate culturally-important varieties and seed-keeping traditions from the African Diaspora.

Symbol Key



Grows well in containers



Good for canning



Easy to grow



Good for drying



Heirloom



Mild heat



Extreme heat



Hot Pepper

Anaheim "Highlander"



Early maturing, rigorous pepper. Plants are tall and large, providing excellent support for the prolific yields of peppers.



Full sun



12 - 18" spacing
30" height
6 - 7" x 2" fruit



Plant outside early June



Harvest July - September



Prefers well-drained, fertile soil
Prefers 6.5 - 6.8 pH
Prefers plenty of phosphorus and calcium

Quantity:

(2.5" pots)



Hot Pepper

Buena Mulata



These cayenne-type peppers mature from purple to orange then red. They were collected by painter Horace Pippin and reintroduced by William Woys Weaver.



Full sun



12 - 18" spacing
30" height
4 - 5" fruit



Plant outside early June



Harvest July - September



Prefers well-drained, fertile soil
Prefers 6.5 - 6.8 pH
Prefers plenty of phosphorus and calcium

Quantity:

(2.5" pots)



Hot Pepper

Cayenne "Red Rocket"



Early, quick-drying for ristras. Thin-walled, attractive fruits are bright red both fresh and dried. Flavor is sweet and hot.



Full sun



12 - 18" spacing
30" height
5 - 6" fruit



Plant outside early June



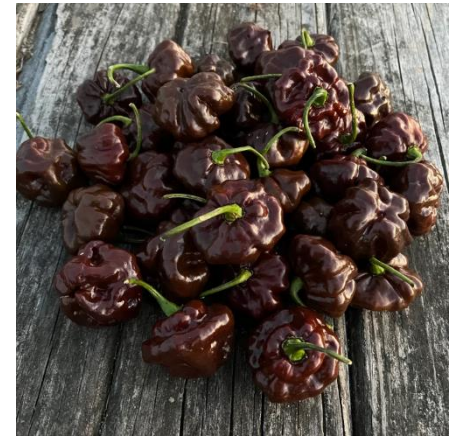
Harvest July - September



Prefers well-drained, fertile soil
Prefers 6.5 - 6.8 pH
Prefers plenty of phosphorus and calcium

Quantity:

(2.5" pots)



Hot Pepper

Chocolate Scotch Bonnet



Very hot, smoky flavored fruits ripen to reddish-brown. Scotch Bonnets are an important part of Caribbean cuisine.



Full sun



12 - 18" spacing
30" height
2" fruit



Plant outside early June



Harvest August - September



Prefers well-drained, fertile soil
Prefers 6.5 - 6.8 pH
Prefers plenty of phosphorus and calcium

Quantity:

(2.5" pots)



Hot Pepper

Fish Pepper



A beautiful plant with variegated immature fruits that ripen red. Historically used by black chefs in Baltimore to flavor seafood dishes.



Full sun



12 - 18" spacing
24" height
2" fruit



Plant outside early June



Harvest August - September



Prefers well-drained, fertile soil
Prefers 6.5 – 6.8 pH
Prefers plenty of phosphorus and calcium
May need staking/support

Quantity:

(2.5" pots)



Hot Pepper

Habanero



Traditional heat with fruity citrus notes; pungent, wrinkled fruits ripen to salmon orange. A key ingredient in Jamaican "jerk" sauces.



Full sun



12 - 18" spacing
30" height
2 x 1.25" fruit



Plant outside early June



Harvest August - September



Prefers well-drained, fertile soil
Prefers 6.5 – 6.8 pH
Prefers plenty of phosphorus and calcium

Quantity:

(2.5" pots)



Hot Pepper

Hungarian Hot Wax



Moderately spicy fruits mature from pale yellow to orange red, and finally, to a vibrant red. Excellent for frying, roasting, or pickling.



Full sun



12 - 18" spacing
30" height
5.5" x 1.5" fruit



Plant outside early June



Harvest July - September



Prefers well-drained, fertile soil
Prefers 6.5 – 6.8 pH
Prefers plenty of phosphorus and calcium

Quantity:

(2.5" pots)



Hot Pepper

Jalapeño "Jalafuego"



Vigorous plants produce high yields of dark green fruits that are resistant to checking (small cracks in skin).



Full sun



12 - 18" spacing
30" height
3.5 - 4" fruit



Plant outside early June



Harvest August - September



Prefers well-drained, fertile soil
Prefers 6.5 – 6.8 pH
Prefers plenty of phosphorus and calcium

Quantity:

(2.5" pots)



Hot Pepper

Bishop's Crown "Mad Hatter"



Big, bushy plants. Moderately sweet flesh with floral and citrus notes and a touch of heat near the seed cavity.



Full sun



12 - 18" spacing
30" height
2.25" fruit



Plant outside early June



Harvest August - September



Prefers well-drained, fertile soil
Prefers 6.5 – 6.8 pH
Prefers plenty of phosphorus and calcium

Quantity:

(2.5" pots)



Hot Pepper

Padron



1 out of 20 fruits will be hot, the rest mild. Fruits all become hot if allowed to grow 2–3" long. Typically sautéed in olive oil with a little sea salt and eaten as tapas in Spain.



Full sun



12 - 18" spacing
30" height
1 - 1.5" fruit



Plant outside early June



Harvest July - September



See growing notes for Bishop's Crown
Harvest when peppers are 1 – 1.5" long

Quantity:

(2.5" pots)



Hot Pepper

Poblano "Bastan"



Fruits are dark green, nearly black, maturing to a deep chocolate with mild heat. Extremely high yielding. Delicious roasted, stuffed, battered and fried - try them stuffed with smoked gouda and grilled!



Full sun



12 - 18" spacing
30" height
4 - 5" fruit



Plant outside early June



Harvest August - September



See growing notes for Bishop's Crown

Quantity:

(2.5" pots)



Hot Pepper

Serrano "Santo Domingo"



Serranos have a bright, grassy flavor and are a bit hotter than jalapeños. Similar in culinary use to jalapeños and great in hot sauces.



Full sun



12 - 18" spacing
30" height
4.5 - 5" fruit



Plant outside early June



Harvest July - September



Prefers well-drained, fertile soil
Prefers 6.5 – 6.8 pH
Prefers plenty of phosphorus and calcium

Quantity:

(2.5" pots)



Hot Pepper

Shishito



1 in 20 fruits will be hot, the rest mild. Great for tempura, or roasted, in stir-fries, or sautéed. In Asia, they are cooked green, but they may also be used when red and slightly sweet.



Full sun



12 - 18" spacing
30" height
3 - 3.5" fruit



Plant outside early June



Harvest July - September



Prefers well-drained, fertile soil
Prefers 6.5 - 6.8 pH
Prefers plenty of phosphorus and calcium

Quantity:

(2.5" pots)



Hot Pepper

Trinidad Seasoning Pepper



A popular cooking pepper in Trinidad and Tobago, used to make traditional green seasoning. Fresh, complex flavor like a habanero but with almost no heat.



Full sun



12 - 18" spacing
30" height
3" fruit



Plant outside early June



Harvest August - September



Prefers well-drained, fertile soil
Prefers 6.5 - 6.8 pH
Prefers plenty of phosphorus and calcium
May need staking/support

Quantity:

(2.5" pots)



Sweet Pepper

Ace



Huge, early yields; nearly every flower produces a pepper.



Full sun



12 - 18" spacing
30" height
4" fruit



Plant outside early June



Harvest July - September



Prefers well-drained, fertile soil
Prefers 6.5 - 6.8 pH
Prefers plenty of phosphorus and calcium

Quantity:

(2.5" pots)



Sweet Pepper

Carmen

Best-tasting Italian Corno di Toro (or "Bull's Horn") type frying pepper. Early, adaptable, and notably sweet. Excellent roasted, grilled, and in salads.



Full sun



12 - 18" spacing
30" height
6" x 2.5" fruit



Plant outside early June



Harvest August - September



Prefers well-drained, fertile soil
Prefers 6.5 - 6.8 pH
Prefers plenty of phosphorus and calcium

Quantity:

(2.5" pots)



Sweet Pepper

Cornito Rosso



Very early, sweet, and attractive. Perfect for grilling and roasting. Known as a kapia type in Europe, where it is quite popular.



Full sun



12 - 18" spacing
30" height
5" x 1 - 1.5" fruit



Plant outside early June



Harvest July - September



Prefers well-drained, fertile soil
Prefers 6.5 - 6.8 pH
Prefers plenty of phosphorus and calcium

Quantity:

(2.5" pots)



Sweet Pepper

Cubanelle "Nassau"

Excellent for frying; usually used when unripe and light green, but can also be used red. Very popular in Caribbean cooking.



Full sun



12 - 18" spacing
30" height
7 - 8" x 2.5" fruits



Plant outside early June



Harvest July - September



Prefers well-drained, fertile soil
Prefers 6.5 - 6.8 pH
Prefers plenty of phosphorus and calcium

Quantity:

(2.5" pots)



Sweet Pepper

Lunchbox Orange



These beautiful, mini-sized peppers are delicious sautéed, as an addition to salads, and perfect for a healthy snack. Sweet, fruity-flavored peppers on tall, strong plants.



Full sun



12 - 18" spacing
30" height
2.5 - 3" x 1.5" fruits



Plant outside early June



Harvest August - September



Prefers well-drained, fertile soil
Prefers 6.5 - 6.8 pH
Prefers plenty of phosphorus and calcium

Quantity:

(2.5" pots)



Sweet Pepper

Lunchbox Red



These beautiful, mini-sized peppers are delicious sautéed, as an addition to salads, and perfect for a healthy snack. Sweet, fruity-flavored peppers on tall, strong plants.



Full sun



12 - 18" spacing
30" height
2.5 - 3" x 1.5" fruits



Plant outside early June



Harvest August - September



Prefers well-drained, fertile soil
Prefers 6.5 - 6.8 pH
Prefers plenty of phosphorus and calcium

Quantity:

(2.5" pots)



Sweet Pepper

Lunchbox Yellow



These beautiful, mini-sized peppers are delicious sautéed, as an addition to salads, and perfect for a healthy snack. Sweet, fruity-flavored peppers on tall, strong plants.



Full sun



12 - 18" spacing
30" height
2.5 - 3" x 1.5" fruits



Plant outside early June



Harvest August - September



Prefers well-drained, fertile soil
Prefers 6.5 – 6.8 pH
Prefers plenty of phosphorus and calcium

Quantity:

(2.5" pots)



Sweet Pepper

Red Knight

Big, blocky fruits are early to turn red. Flavor is fruity and sweet.



Full sun



12 - 18" spacing
30" height
7 - 8" x 2.5" fruits



Plant outside early June



Harvest July - September



Prefers well-drained, fertile soil
Prefers 6.5 – 6.8 pH
Prefers plenty of phosphorus and calcium

Quantity:

(2.5" pots)



Tomatoes and Tomatillos

Mulching and Watering Tomatoes:

See notes for peppers above.

Harvesting Tomatoes:

Tomatoes can be harvested before they are fully colored and will ripen off the vine; they should pull off the vine with a tug. Cherry tomatoes can split very easily; harvesting them with the green calyxes attached can help prevent splitting. This can be done by bending them off at the joint where the calyx meets the vine.

Staking Tomatoes:

Most tomatoes need strong supports to climb on. On the farm, we drive stakes along our tomato beds, then weave twine horizontally between them to secure the plants. Twine layers are placed every 8 - 12" all the way up the height of the stakes. Other types of trellising can also work; but in every case the plants should be secured to their supports at regular intervals up to the height of the plant.

Determinate and Indeterminate Tomatoes:

Many common tomato varieties are "indeterminate," meaning they are vining types that set fruit continually throughout the season. "Determinate" plants, on the other hand, stop growing once they reach a certain size, and set all of their fruit at once. Determinate plants typically need little or no pruning.

Pruning Indeterminate Tomatoes:

Tomatoes need plenty of airflow and light. Pruning removes the "suckers" from the plants before they turn into a tangle of new branches, blocking this air and light. "Suckers" are the branches that form in the leaf axils, where the main leaves meet the main stem. Once the plants begin showing flowers, use clean hands or clean clippers to remove all suckers, except for the one just below the lowest flower/fruit cluster. Repeat every week or two, up until 1 - 2 weeks before the first expected tomato harvest.

Symbol Key



Grows well in containers



Heat tolerant



Easy to grow



Good for sauces / canning



Heirloom



Indeterminate



Determinate



Husk Cherry

Goldie



Plants are branching and prolific. Sweet, tropical tasting fruits can be eaten raw, dried like raisins, frozen, canned, or made into desserts.



Full sun



18 - 24" spacing
1.5 - 3' height
0.5 - 0.75" fruit



Plant outside early June



Harvest August - October



May need staking/support
Harvest fallen fruit or fruit that detaches easily, with dry husks

Quantity:

(2.5" pots)



Tomatillo

De Milpa



In Mexico, these grow unattended in family cornfields. Fruits store for several weeks, handy for fresh salsa.



Full sun



24 - 36" spacing
Up to 5' height
1.5 - 2" fruits



Plant outside early June



Harvest August - October



May need staking/support
Plant deeply
Harvest when husks split but fruit is still firm

Quantity:

(2.5" pots)



Tomatillo

Toma Verde



Early variety with tart flavor when young, becoming sweeter as it ripens. Perfect for Salsa Verde.



Full sun



24 - 36" spacing
Up to 5' height
2" fruits



Plant outside early June



Harvest July - October



See growing notes for De Milpa

Quantity:

(2.5" pots)



Cherry Tomato

Black Cherry



Sweet, robust, purple-brown fruits are regarded as one of the best-tasting tomatoes. High-yielding.



Full sun



24 - 36" spacing
Height depends on trellising
1" fruits



Plant outside late May



Harvest July - October



Requires trellising
Prefers medium-rich soil
Prefers 6.0 - 6.8 pH
Avoid excess nitrogen
Pruning recommended

Quantity:

(2.5" pots)



Cherry Tomato

Gold Nugget

D

Early, prolific cherry tomatoes on healthy, compact plants. Flavor is well-balanced and delicious, and most early fruits are seedless.



Full sun



12 - 24" spacing
3 - 4' height
1" fruits



Plant outside late May



Harvest July - October



May need staking/support
Prefers medium-rich soil
Prefers 6.0 - 6.8 pH
Avoid excess nitrogen

Quantity:

(2.5" pots)



Cherry Tomato

Jasper

I

Excellent texture; all the flavor of a full-sized tomato. Prolific plants stay healthy for a long harvest window.



Full sun



24 - 36" spacing
Height depends on trellising
0.5 - 0.75" fruit



Plant outside late May



Harvest July - October



Requires trellising
Prefers medium-rich soil
Prefers 6.0 - 6.8 pH
Avoid excess nitrogen
Pruning recommended

Quantity:

(2.5" pots)



Cherry Tomato

Juliet

I 

Delicious, rich tomato flavor, fresh or cooked. Typically 12-18 fruits per cluster.



Full sun



24 - 36" spacing
Height depends on trellising
2 - 2.25" x 1.5" fruits



Plant outside late May



Harvest July - September



See growing notes for Jasper

Quantity:

(2.5" pots)



Cherry Tomato

Matt's Wild Cherry

I 

Full-flavored, soft fruits with a high sugar content. Fantastic in salsa and for fresh eating. These tomatoes grow wild in Eastern Mexico.



Full sun



24 - 36" spacing
Height depends on trellising
0.5 - 0.75" fruits



Plant outside late May



Harvest July - October



See growing notes for Jasper

Quantity:

(2.5" pots)



Cherry Tomato

Pink Bumble Bee



Excellent sweet flavor. Vigorous plants perform under tough conditions.



Full sun



24 - 36" spacing

Height depends on trellising
1 - 1.25" fruits



Plant outside late May



Harvest July - October



Requires trellising
Prefers medium-rich soil
Prefers 6.0 - 6.8 pH
Avoid excess nitrogen
Cover soil with dark mulch for warmth
Pruning recommended

Quantity:

(2.5" pots)



Cherry Tomato

Pink Champagne



Plants are productive and less vining than other cherries. Packs the flavor of a large tomato in a small size.



Full sun



24 - 36" spacing

Height depends on trellising
1" fruit



Plant outside late May



Harvest July - October



See growing notes for Pink Bumble Bee

Quantity:

(2.5" pots)



Cherry Tomato

Purple Bumble Bee



An eye-catching combination of the dusky purple seen in heirloom tomatoes and metallic green striping. Sweet flavor and meaty texture. Vigorous plants perform under tough conditions.



Full sun



24 - 36" spacing

Height depends on trellising
1 - 1.25" fruit



Plant outside late May



Harvest July - October



See growing notes for Pink Bumble Bee

Quantity:

(2.5" pots)



Cherry Tomato

Sungold



Exceptionally sweet, intense fruity flavor can't be beat. Vigorous plants start yielding early and bear right through the season. Tendency to split precludes shipping, making these an exclusively fresh-market treat.



Full sun



24 - 36" spacing

Height depends on trellising
1 - 1.25" fruit



Plant outside late May



Harvest July - October



See growing notes for Pink Bumble Bee

Quantity:

(2.5" pots)



Cherry Tomato

Verona



Delicious, rich tomato flavor, fresh or cooked. Long clusters on a medium-vigorous vine.



Full sun



24 - 36" spacing

Height depends on trellising
1 - 1.25" fruit



Plant outside late May



Harvest July - September



Requires trellising
Prefers medium-rich soil
Prefers 6.0 - 6.8 pH
Avoid excess nitrogen
Pruning recommended

Quantity:

(2.5" pots)



Roma Tomato

Amish Paste



Flavorful, sweet, and juicy for slicing, with great meatiness for cooking down. Very few seeds.



Full sun



24 - 36" spacing

Height depends on trellising
3 - 5" fruit



Plant outside late May



Harvest August - September



Requires trellising
Prefers medium-rich soil
Prefers 6.0 - 6.8 pH
Avoid excess nitrogen
Pruning recommended

Quantity:

(2.5" pots)



Roma Tomato

Granadero



High yields of thick-walled tomatoes with great flavor; ideal for fresh tomato sauces, salsas, and salads.



Full sun



24 - 36" spacing

Height depends on trellising
3 - 4" fruit



Plant outside late May



Harvest August - September



Requires trellising
Prefers medium-rich soil
Prefers 6.0 - 6.8 pH
Avoid excess nitrogen
Pruning recommended

Quantity:

(2.5" pots)



Roma Tomato

Plate de Haiti



Incredibly high-yielding tomato grown in Haiti and the Dominican Republic since before the 1560's. The seeds were brought to North America by Creole people who fled after the Haitian Revolution.



Full sun



24 - 36" spacing

Height depends on trellising
2" fruit



Plant outside late May



Harvest August - September



See growing notes for Granadero

Quantity:

(2.5" pots)



Roma Tomato

San Marzano II



Among the best paste tomatoes of all time; they peel easily and cook quickly. The strain was developed in Italy for the 1950s canning industry.



Full sun



24 - 36" spacing

Height depends on trellising

3 - 4" fruit



Plant outside late May



Harvest August - September



Requires trellising

Prefers medium-rich soil

Prefers 6.0 – 6.8 pH

Avoid excess nitrogen

Pruning recommended

Quantity:

(2.5" pots)



Roma Tomato

Speckled Roman



An elongated plum tomato with bright red skin and golden streaks. Meaty red flesh has little juice, is good for fresh eating, and cooks quickly into sauce. Excellent flavor.



Full sun



24 - 36" spacing

Height depends on trellising

3 - 5" fruit



Plant outside late May



Harvest August - September



See growing notes for San

Marzano II

Quantity:

(2.5" pots)



Slicing Tomato

Big Beef



Big Beef tomatoes have full flavor—among the best—and ripen early for their size.



Full sun



24 - 36" spacing

Height depends on trellising

3 - 5" fruit



Plant outside late May



Harvest August - September



Requires trellising

Prefers medium-rich soil

Prefers 6.0 – 6.8 pH

Avoid excess nitrogen

Pruning recommended

Quantity:

(2.5" pots)



Slicing Tomato

Chef's Choice Orange



Hybrid tomato bred from the beautiful and delicious heirloom Amana Orange.



Full sun



24 - 36" spacing

Height depends on trellising

5 - 6" fruit



Plant outside late May



Harvest August - September



See growing notes for Big Beef

Quantity:

(2.5" pots)



Slicing Tomato

Marmalade Skies



Tall, healthy plants produce abundant blemish-free fruits.



Full sun



24 - 36" spacing

Height depends on trellising
3 - 5" fruit



Plant outside late May



Harvest August - September



Requires trellising
Prefers medium-rich soil
Prefers 6.0 – 6.8 pH
Avoid excess nitrogen
Pruning recommended

Quantity:

(2.5" pots)



Slicing Tomato

New Girl



First early tomatoes; an improvement on Early Girl. Widely adapted and with great flavor.



Full sun



12 - 24" spacing

Height depends on trellising
2 - 4" fruit



Plant outside late May



Harvest July - September



See growing notes for
Marmalade Skies

Quantity:

(2.5" pots)



Specialty Tomato

Aunt Lou's Underground Railroad



Juicy beefsteak with meaty, tangy fruits. These seeds were brought from Kentucky to Ohio by an unnamed Black man in the mid 19th century and eventually earned a place in the Slow Food Ark of Taste.



Full sun



24 - 36" spacing

Height depends on trellising
3 - 5" fruit



Plant outside late May



Harvest August - September



See growing notes for
Marmalade Skies

Quantity:

(2.5" pots)



Specialty Tomato

Black Krim



Russian heirloom. Black Krim combines bold, smoky flavor and good texture with an unusual appearance. Brown/green shoulders get darker with more heat and sunlight. High yielding.



Full sun



24 - 36" spacing

Height depends on trellising
3 - 5" fruit



Plant outside late May



Harvest August - September



See growing notes for
Marmalade Skies

Quantity:

(2.5" pots)



Specialty Tomato

Brandywine



One of the most flavorful tomatoes; its luscious flavor is "very rich, loud, and distinctively spicy."



Full sun



24 - 36" spacing

Height depends on trellising
4 - 6" fruit



Plant outside late May



Harvest August - September



Requires trellising
Prefers medium-rich soil
Prefers 6.0 – 6.8 pH
Avoid excess nitrogen
Pruning recommended

Quantity:

(2.5" pots)



Specialty Tomato

Cherokee Purple



Famously rich flavor and texture make this a colorful favorite among heirloom enthusiasts.



Full sun



24 - 36" spacing

Height depends on trellising
3 - 5" fruit



Plant outside late May



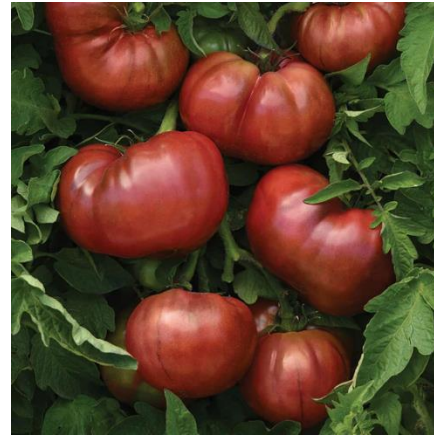
Harvest August - September



Requires trellising
Prefers medium-rich soil
Prefers 6.0 – 6.8 pH
Avoid excess nitrogen
Pruning recommended

Quantity:

(2.5" pots)



Specialty Tomato

Darkstar



A vigorous purple beefsteak with heirloom flavor.



Full sun



24 - 36" spacing

Height depends on trellising
2 - 4" fruit



Plant outside late May



Harvest August - September



See growing notes for
Brandywine

Quantity:

(2.5" pots)



Specialty Tomato

Green Zebra



Succulent green fruits with sweet and zingy flavor hold up under adverse conditions and rarely crack. Fruits start out pale green with dark green stripes that soften and turn yellow when ripe.



Full sun



24 - 36" spacing

Height depends on trellising
2 - 3" fruit



Plant outside late May



Harvest August - September



See growing notes for
Brandywine

Quantity:

(2.5" pots)



Specialty Tomato

Harvest Moon



Firm, golden fruits with red blush inside. Terrific fruit set all the way up the plant.



Full sun



24 - 36" spacing
Height depends on trellising
3 - 4" fruit



Plant outside late May



Harvest August - September



Requires trellising
Prefers medium-rich soil
Prefers 6.0 – 6.8 pH
Avoid excess nitrogen
Pruning recommended

Quantity:

(2.5" pots)



Specialty Tomato

Mortgage Lifter



Exceptionally meaty, old-fashioned tomato flavor. 'Mortgage Lifter' was introduced by M.C. Byles in the 1940s; he sold plants for \$1 each and paid off his \$6000 mortgage.



Full sun



24 - 36" spacing
3 - 4' height
5 - 7" fruit



Plant outside late May



Harvest August – September



See growing notes for Harvest Moon.

Quantity:

(2.5" pots)



Specialty Tomato

Pink Berkeley Tie Dye



Striped fruits have a unique appearance and outstanding, sweet and complex flavor.



Full sun



24 - 36" spacing
Height depends on trellising
3 - 4" fruit



Plant outside late May



Harvest August - September



See growing notes for Harvest Moon

Quantity:

(2.5" pots)



Specialty Tomato

Purple Calabash



Rich, acidic and sweet tomatoes are delicious both fresh and as a sauce. This variety is similar to those grown in Mexico before colonization.



Full sun



24 - 36" spacing
Height depends on trellising
3" fruit



Plant outside late May



Harvest August - September



See growing notes for Harvest Moon

Quantity:

(2.5" pots)



Specialty Tomato

Rose de Berne



A Swiss heirloom with soft yet durable skin and an even balance of acidity and sweetness.



Full sun



24 - 36" spacing

Height depends on trellising
4 - 6" fruit



Plant outside late May



Harvest July - September



Requires trellising
Prefers medium-rich soil
Prefers 6.0 – 6.8 pH
Avoid excess nitrogen
Pruning recommended

Quantity:

(2.5" pots)



Specialty Tomato

Striped German



The marbled interior looks beautiful sliced. Complex, fruity flavor and smooth texture.



Full sun



24 - 36" spacing

Height depends on trellising
4 - 6" fruit



Plant outside late May



Harvest August - September



Requires trellising
Prefers medium-rich soil
Prefers 6.0 – 6.8 pH
Avoid excess nitrogen
Pruning recommended

Quantity:

(2.5" pots)



Eggplant

Mulching Eggplants:

Eggplants prefer warm soil, which can be achieved early in the season with a dark mulch such as black plastic or landscape fabric. Other mulches may be applied once soil temperatures have warmed up, as they may limit soil's ability to warm up quickly in the spring. Mulch will also help the soil stay moist.

Harvesting Eggplants:

Eggplants should be harvested when they are still glossy; they will become hard and dull as they age, at which point their flesh will be tougher and more bitter, with larger seeds. Clip eggplants off at the stem (a firm upward tug can sometimes work as well) but be careful of the spiky spines that some eggplants have around the stem area.

Symbol Key



Grows well in containers



Easy to grow



Heirloom



Eggplant

Fairy Tale



Abundant clusters of tiny fruits on compact plants. No bitterness, very few seeds, and great flavor.



Full sun



18 - 24" spacing
18 - 24" height
2 - 4" fruit



Plant outside early June



Harvest August - September



Prefers fertile, well-drained soil
Prefers 6.2 - 6.8 pH
Avoid excess nitrogen
Cover soil with dark mulch for warmth
Pruning and staking promotes straight fruit

Quantity:

(2.5" pots)



Eggplant

Gaudi



Prolific yielder of glossy fruits. Spineless and stress tolerant.



Full sun



18 - 24" spacing
18 - 36" height
6 - 8" fruit



Plant outside early June



Harvest August - September



See growing notes for Fairy Tale

Quantity:

(2.5" pots)



Eggplant

Paloma



Vivid, clean white fruits have a mildly sweet flavor and creamy texture.



Full sun



18 - 24" spacing
18 - 30" height
4 - 5" fruit



Plant outside early June



Harvest August - September



See growing notes for Fairy Tale

Quantity:

(2.5" pots)



Eggplant

Turkish Delight



Elongated shape and minimal seeds for quick cooking and rich flavor. Prolific yields. Popular in Turkey and the Middle East. Spineless.



Full sun



12 - 24" spacing
3 - 4' height
8 - 10" fruit



Plant outside late May



Harvest July - August



See growing notes for Fairy Tale

Quantity:

(2.5" pots)



Eggplant

White Garden Egg



Succulent, firm, slightly bitter fruits used in West African and Southeast Asian recipes. Leaves are also edible.



Full sun



18 – 24” spacing
4 – 5’ height
3” fruit



Plant outside early June



Harvest August - September



See growing notes for Fairy Tale

Harvest when fruits are still pure white and 3” long

Quantity:

(2.5” pots)



Cucurbits (Cucumbers, Melons, Squash)

Mulching Cucurbits:

Cucurbits prefer warm soil, which can be achieved early in the season with a dark mulch such as black plastic or landscape fabric. Other mulches may be applied once soil temperatures have warmed up, as they may limit soil's ability to warm up quickly in the spring. Mulch will also help the soil stay moist.

Harvesting Cucurbits:

Cucurbit plants can be spiny, so be careful during harvest.

Summer squash should be checked every day or two during its harvest window, and harvested immediately once it's within the desired size range. If allowed to get too large, it will become mealy. Cucumbers should also be monitored closely, and harvested while still green and mostly rounded out (a few ridges will remain) before they become bitter. Both may be cut from the plant, leaving an inch or so of stem on the fruit.

Melons are likely ripe when the tendril nearest the fruit has died and dried up; for watermelons, this plus a dull "thud" sound when tapped means the fruit can be cut from the vine. For cantaloupes, ripe fruit can be pulled from the vine by hand; it can also be harvested slightly before this point and ripened on the counter.

Winter squash should be clipped off the vine before any hard frosts, leaving at least an inch or two of stem on the fruit. Some squash must be [cured](#) at 80° – 85° for a week or so before becoming good to eat; it can then often be stored for months at 50° - 60° with good ventilation and low humidity.

Symbol Key



Heat tolerant



Drought tolerant



Heirloom



Good for canning



Good for storing



Melon

Galia "Arava"

Extra-sweet eating quality, high yields, and extended harvest.



Full sun



18" spacing
1 – 2' high, 4 – 7' long vines
5 - 6" fruit



Plant outside early June



Harvest August - September



Prefers southern exposure
Prefers light, well drained soil
Prefers 7.0 pH
Do not water the last week before fruits are ripe
Cover soil with dark mulch for warmth
Harvest when fruit is yellow and comes off with a light tug

Quantity:

(packs of 4)



Melon

Cantaloupe

Dependable melon with excellent sweet and musky flavor.



Full sun



18" spacing
1 – 2' high, 4 – 7' long vines
5 - 6" fruit



Plant outside early June



Harvest August - September



Prefers southern exposure
Prefers light, well drained soil
Prefers 7.0 pH
Do not water the last week before fruits are ripe
Cover soil with dark mulch for warmth
Harvest when fruit comes off with a light tug

Quantity:

(packs of 4)



Watermelon

Juice Box

Consistent quality and refreshing sweet, juicy flavor.



Full sun



12 – 18" spacing (12" for more, smaller fruit)
1 – 2' high, 4 – 7' long vines
6 - 8" fruit



Plant outside early June



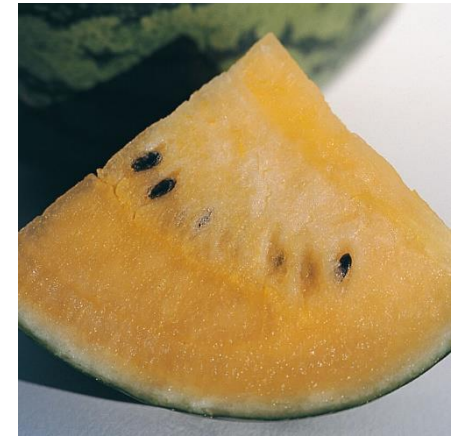
Harvest August - September



Prefers southern exposure
Prefers light, well drained soil
Prefers 6.5 – 7.5 pH
Do not water the last week before fruits are ripe
Cover soil with dark mulch
Harvest when tendril nearest to fruit is brown/dead

Quantity:

(packs of 4)



Watermelon

New Orchid

Sweet, bright orange flesh with outstanding, sherbet-like taste. 1 – 2 fruits per plant.



Full sun



18" spacing
1 – 2' high, 4 – 7' long vines
6 - 9" fruit



Plant outside early June



Harvest August - September



Prefers southern exposure
Prefers light, well drained soil
Prefers 6.5 – 7.5 pH
Do not water the last week before fruits are ripe
Cover soil with dark mulch
Harvest when tendril nearest to fruit is brown/dead

Quantity:

(packs of 4)





Pickling Cucumber

Lemon



Sweet, flavorful cucumber great pickled or raw in salads.



Full sun



12" spacing
3 – 4' long vines
1.5 – 2.5" fruit



Plant outside early June



Harvest August - September



Prefers warm, well drained, fertile soil
Prefers 6.0 – 6.8 pH
Cover soil with dark mulch
Pick when fruit is still 1.5 – 2.5"

Quantity:

(packs of 4)



Pickling Cucumber

Little Leaf



Compact, multibranching plants with small leaves yield well under stress. Fruits are great eaten fresh or pickled.



Full sun



12" spacing
1 – 4' long vines
3 – 5" fruit



Plant outside early June



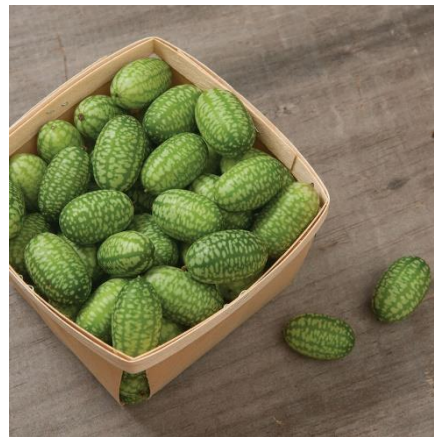
Harvest July - September



Prefers warm, well drained, fertile soil
Prefers 6.0 – 6.8 pH
Cover soil with dark mulch

Quantity:

(packs of 4)



Pickling Cucumber

Mexican Sour Gherkin



Tiny fruits look like miniature watermelons and taste like cucumbers with tangy citrus overtones.



Full sun



12" spacing
6 – 10' long vines
1" fruit



Plant outside early June



Harvest August - September



Prefers warm, well drained, fertile soil
May need trellising/support
Prefers 6.0 – 6.8 pH
Cover soil with dark mulch
Harvest when still 1" long

Quantity:

(packs of 4)



Pickling Cucumber

Salt and Pepper



Sweet, crunchy white cucumbers with black spines.



Full sun



12" spacing
3 – 6' long vines
3 – 5" fruit



Plant outside early June



Harvest July - September



Prefers warm, well drained, fertile soil
Prefers 6.0 – 6.8 pH
Cover soil with dark mulch

Quantity:

(packs of 4)



Slicing Cucumber

Marketmore 76

Long, slender cucumbers stay dark green and mild-tasting even under heat stress. Plants are vigorous and highly productive.



Full sun

12" spacing
6 - 12" high, 3 - 6' long vines
8 - 9" fruit



Plant outside early June



Harvest August - September



Prefers warm, well drained, fertile soil
Prefers 6.0 - 6.8 pH
Cover soil with dark mulch for warmth

Quantity:
(packs of 4)



Slicing Cucumber

Suyo Long



Great for fresh eating, pickling or cooking. Fruits are spiny when young, and smoother at maturity.



Full sun

12 - 24" spacing
3 - 6' long vines
15" fruit



Plant outside early June

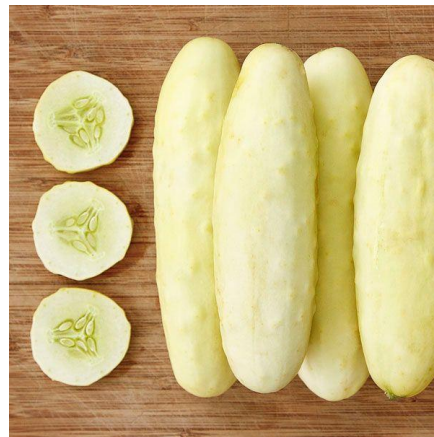


Harvest August - September



Prefers warm, well drained, fertile soil
Prefers 6.0 - 6.8 pH
Cover soil with dark mulch for warmth
Trellis to promote straight fruit

Quantity:
(packs of 4)



Slicing Cucumber

Silver Slicer



Thin skinned, creamy white cucumber with crisp, buttery texture and delicious flavor that never gets bitter.



Full sun

12 - 24" spacing
3 - 6' long vines
5 - 6" fruit



Plant outside early June



Harvest July - September



Prefers warm, well drained, fertile soil
Prefers 6.0 - 6.8 pH
Cover soil with dark mulch for warmth
Trellis to promote straight fruit

Quantity:
(packs of 4)



Summer Squash

Cousa - "Magda"



Sweet, nutty, superb flavor. Fruits can be used for stuffing, stir-fries, and pickling. Blossoms are also edible. High-yielding over a long season.



Full sun

18 - 24" spacing
2 - 3' height
3 - 4" fruit



Plant outside late May



Harvest July - September



Prefers well drained, fertile soil
Prefers 5.8 - 6.8 pH
Cover soil with dark mulch for warmth
Pick when 3-4" long

Quantity:
(packs of 4)



Summer Squash

Yellow Squash

Fruits have a delicious nutty flavor and smooth yellow skin. Flowers are edible and great stuffed and fried.



Full sun



18 - 24" spacing
2 - 3' height
4 - 6" fruit



Plant outside late May



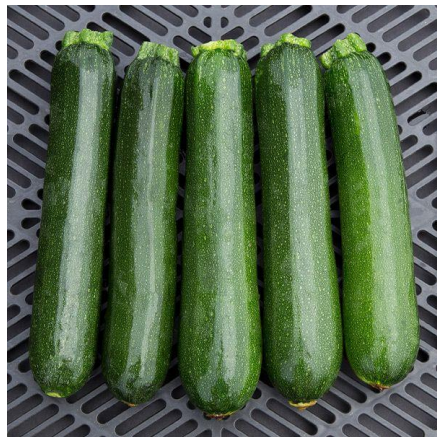
Harvest July - September



Prefers well drained, fertile soil
Prefers 5.8 - 6.8 pH
Cover soil with dark mulch for warmth
Pick when still 4 - 6" long

Quantity:

(packs of 4)



Summer Squash

Zucchini

Vigorous plants crank out fruits of exceptional quality over a long season.



Full sun



18 - 24" spacing
2 - 3' height
7 - 8" fruit



Plant outside late May



Harvest July - September



Prefers well drained, fertile soil
Prefers 5.8 - 6.8 pH
Cover soil with dark mulch for warmth
Pick when 7 - 8" long

Quantity:

(packs of 4)



Winter Squash

Acorn - "Carnival"

Both decorative and edible, with a nutty, sweet, and buttery flavor.



Full sun



24 - 36" spacing
2 - 3' high, 6 - 12' long vines
4 - 5" fruit



Plant outside late May



Harvest September - October



Prefers fertile, well drained soil
Prefers 6.0 - 6.8 pH
Cover soil with dark mulch for warmth
Store at 50° - 60° after harvest

Quantity:

(packs of 4)



Winter Squash

Acorn - "Night Shift"



High yielding plants. Squash can be stored for a few months while maintaining its intense, dark color and superior eating quality.



Full sun



24 - 36" spacing
2 - 3' high, 6 - 12' long vines
4 - 5" fruit



Plant outside late May



Harvest September - October



Prefers fertile, well drained soil
Prefers 6.0 - 6.8 pH
Cover soil with dark mulch for warmth
Store at 50° - 60° after harvest

Quantity:

(packs of 4)



Winter Squash

Acorn – “Starry Night”



Bushy plants produce especially well-flavored, smooth, sweet squash. Can be stored through the New Year.



Full sun



24 - 36” spacing

2 - 3’ high, 6 - 12’ long vines

4 - 5” fruit



Plant outside late May



Harvest September - October



Prefers fertile, well drained soil

Prefers 6.0 – 6.8 pH

Cover soil with dark mulch for warmth

Store at 50° - 60° after harvest

Quantity:

(packs of 4)



Winter Squash

Butternut



High yields of classic squash with delicious, finely textured orange flesh.



Full sun



36 – 72” spacing

2 – 3’ high, 6 - 12’ long vines

8 - 12” fruit



Plant outside late May



Harvest September - October



Prefers fertile, well drained soil

Prefers 6.0 – 6.8 pH

Cover soil with dark mulch for warmth

Cure harvested squash for

a week then store at 50° - 55°

Quantity:

(packs of 4)



Winter Squash

Butternut – “Honeynut”



Mini butternut with rich, sweet flavor.



Full sun



18 – 24” spacing

2 – 3’ high, 6 - 12’ long vines

4 - 6” fruit



Plant outside late May



Harvest September - October



Prefers fertile, well drained soil

Prefers 6.0 – 6.8 pH

Cover soil with dark mulch for warmth

Cure harvested squash for

a week then store at 50° - 55°

Quantity:

(packs of 4)



Winter Squash

Bush Delicata

Delicious smooth, nutty flesh with hints of butter and brown sugar. Skin starts creamy white with green stripes and flecks, curing to striped light yellow.



Full sun



18 - 24” spacing

2 - 3’ high, 4 - 6’ wide bushes

5 - 7” fruit



Plant outside late May



Harvest August - October



Prefers fertile, well drained soil

Prefers 5.8 – 6.8 pH

Cover soil with dark mulch for warmth

Store at 50° - 60° after harvest

Quantity:

(packs of 4)



Winter Squash

Delicata

Very sweet squash with skin that is tender enough to eat – great for stuffing and baking.



Full sun



24 - 36" spacing
2 - 3' high, 5 - 9' long vines
7 - 9" fruit



Plant outside late May



Harvest September - October



Prefers fertile, well drained soil
Prefers 6.0 - 6.8 pH
Cover soil with dark mulch for warmth
Store at 50° - 60° after harvest

Quantity:
(packs of 4)



Winter Squash

Delicata – “Jester”



Superb flavor in an eye-catching fruit. High-yielding and widely adapted.



Full sun



24 - 36" spacing
2 - 3' high, 5 - 9' long vines
4 - 5" fruit



Plant outside late May

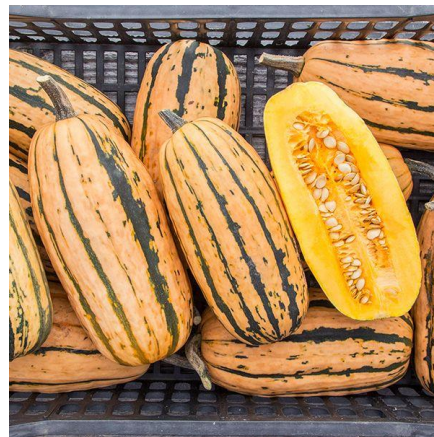


Harvest September - October



Prefers fertile, well drained soil
Prefers 6.0 - 6.8 pH
Cover soil with dark mulch for warmth
Store at 50° - 60° after harvest

Quantity:
(packs of 4)



Winter Squash

Delicata – “Honey Boat”



Claimed to be the “sweetest squash in existence.” Holds well and keeps its sweetness in storage.



Full sun



24 - 36" spacing
2 - 3' high, 5 - 9' long vines
7 - 9" fruit



Plant outside late May



Harvest September - October



Prefers fertile, well drained soil
Prefers 6.0 - 6.8 pH
Cover soil with dark mulch for warmth
Store at 50° - 60° after harvest

Quantity:
(packs of 4)



Winter Squash

Green Striped Cushaw



Many large, mildly sweet and meaty fruits on hardy vines. Known as ‘sweet potato pumpkin’ and great for pies, cushaw butter, puddings, or roasting.



Full sun



36 - 72" spacing
2 - 3' high, 6 - 12' long vines
14 - 20" fruit



Plant outside late May



Harvest September - October



Prefers fertile, well drained soil
Prefers 6.0 - 6.8 pH
Cover soil with dark mulch
Cure harvested squash for a week then store at 45° - 50°

Quantity:
(packs of 4)



Winter Squash

Hubbard - "Tetsukabuto"



A kabocha/butternut cross with high yields under stress. Sweet, nutty flavor and very long storage.



Full sun



24 - 36" spacing

2 - 3' high, 6 - 12' long vines

6 - 7" fruit



Plant outside late May



Harvest September - October



Prefers fertile, well drained soil

Prefers 6.0 - 6.8 pH

Cover soil with dark mulch

Cure harvested squash for 6

weeks then store at 50° - 60°

Must grow near butternut,

kabocha, hubbard, or buttercup

Quantity:

(packs of 4)



Winter Squash

Kabocha - "Sunshine"



A winning combination of sweetness, flaky texture, and depth of flavor. Keeps very well.



Full sun



24 - 36" spacing

2 - 3' high, 6 - 12' long vines

6 - 7" fruit



Plant outside late May



Harvest September - October



Prefers fertile, well drained soil

Prefers 6.0 - 6.8 pH

Cover soil with dark mulch for warmth

Eat right away or cure

harvested squash for a

week then store at 50° - 60°

Quantity:

(packs of 4)



Winter Squash

Pumpkin - "Long Pie"



Originally grown by Native Americans; great for pies, or can be eaten young like summer squash.



Full sun



36 - 72" spacing

2 - 3' high, 6 - 12' long vines

14 - 16" fruit



Plant outside late May



Harvest September - October



Prefers fertile, well drained soil

Prefers 5.8 - 6.8 pH

Cover soil with dark mulch

Harvest when skin is hard but still green (ripens in storage)

Cure harvested squash for

a week then store at 50° - 55°

Quantity:

(packs of 4)



Winter Squash

Pumpkin - "Pie-Pita"



Each delicious, sweet pie pumpkin contains about ¼ lb of hullless seeds- perfect lightly salted and roasted!



Full sun



24 - 36" spacing

2 - 3' high, 6 - 12' long vines

6 - 8" fruit



Plant outside late May



Harvest September - October



Prefers fertile, well drained soil

Prefers 6.0 - 6.8 pH

Cover soil with dark mulch

Eat right away or cure

harvested squash for a week

then store at 50° - 60°

Quantity:

(packs of 4)



Winter Squash

Pumpkin – “Winter Luxury”



Gorgeous pumpkins with netted skin and delicious, silky flesh.



Full sun



24 - 36” spacing

2 – 3’ high, 6 - 12’ long vines

6 – 8” fruit



Plant outside late May



Harvest September - October



Prefers fertile, well drained soil

Prefers 6.0 – 6.8 pH

Cover soil with dark mulch for warmth

Cure harvested squash for a week then store at 50° - 55°

Quantity:

(packs of 4)



Winter Squash

Spaghetti

Slightly sweet, nutty flavor and noodle-like consistency. Bake or boil the squash, fork out the flesh, and top with pasta sauce.



Full sun



24 - 36” spacing

2 – 3’ high, 5 – 7’ long vines

6 - 8” fruit



Plant outside late May



Harvest September - October



Prefers fertile, well drained soil

Prefers 6.0 – 6.8 pH

Cover soil with dark mulch for warmth

Store at 50° - 60° after harvest

Quantity:

(packs of 4)



Onions

Growing Onions:

Onions should be kept well weeded and should be watered regularly. For larger onions and for ease of weeding, make sure to give the plants enough space – about 4 – 6” per individual onion plant, in rows 18” apart. Since each plug contains about 3 onion plants, we typically plant these plugs 1 foot apart within each row, and the plants spread out as they grow. An alternative is to plant the plugs 4” apart, then thin or harvest some smaller onions in early-to-mid June so that there is only one plant every 4 inches.

Harvesting Onions:

In general, harvest onions at desired size by pulling straight up at the base of the onion tops. If storing onions after harvesting, pull onions from the base of the tops when they appear to be drying out and flopping over.

Storing Onions:

When necks become soft and 50% of tops are falling over, pull and cure in well-ventilated space out of direct sunlight (to prevent greening) or sun-cure in field for 2–7 dry days before moving to dry location. Cure until tops are completely dried; about 2 weeks. When dry, clip off tops and roots and store in onion bags or shallow boxes at near freezing and 65–70% humidity.

Symbol Key



Heat tolerant



Good for canning



Good for storing



Onion

Red Long of Tropea



Gorgeous bottle-shaped bulbs with brilliant red coloring. Preferred by culinary enthusiasts for easy kitchen prep and mild, sweet flavor; great for pickling and using raw in salads.



Full sun



12" spacing
10 - 30" height
4 - 6" bulbs



Plant outside mid May



Harvest August



Prefers rich, well drained soil
Prefers 6.2 - 6.8 pH
Harvest at desired size; can be harvested small for bunching

Quantity:
(packs of 4)



Onion

Red Wing



Uniform, hard onions have thick skin for long storage.



Full sun



12" spacing
10 - 30" height
3 - 4" bulbs



Plant outside mid May



Harvest September



Prefers rich, well drained soil
Prefers 6.2 - 6.8 pH
Harvest at desired size; or if storing, pull when tops dry and flop over; cure outside 3-5 days, then cool slowly and store at near freezing temperature

Quantity:
(packs of 4)



Onion

Talon



Stunning round, rock-hard globes with pretty golden skin and a beautiful clean white interior.



Full sun



12" spacing
10 - 30" height
3 - 4" bulbs



Plant outside mid May



Harvest July - September



See growing notes for Red Wing onions

Quantity:
(packs of 4)



Shallots

Conservor



Reddish copper single-bulb shallots are suitable for long storage.



Full sun



12" spacing
24" vines
4 - 4.5" pods



Plant outside mid May



Harvest September



See growing notes for Red Wing onions

Quantity:
(packs of 4)



Other Vegetables

Growing Vegetables:

Consistent watering can make a difference in preventing splitting or nutrient deficiencies in many crops. Aim for 1” of water per week, allowing soil to drain fully between waterings. Keep in mind that if you get rain, you won’t need to water.

Harvesting Greens:

Leafy greens can typically be harvested at whatever size is desired; if harvesting large leaves for a bunch, select the outer leaves to cut and leave the center leaves to regrow. If harvesting smaller leaves, the whole plant can be cut just above the ground. It may regrow but will likely have lesser quality.

Symbol Key



Cold tolerant



Heat tolerant



Grows well in containers



Stores well



Easy to grow



Good for sauces / canning



Heirloom



Beans

Green Beans – “Provider”



Compact plants are adaptable to diverse conditions.



Full sun



2” spacing
16 – 24” height
5.5” beans



Plant outside late May



Harvest July



Prefers well-drained soil
Prefers 6.5 - 6.8 pH



Beans

Shelling Beans – “Flambo”



Brilliant red pods with attractive, speckled beans. Harvest as shell beans when pods are dark red with yellow background; or harvest as a dry bean.



Full sun



2” spacing
16 – 24” height
5.5” beans



Plant outside late May



Harvest August - September



Prefers well-drained soil
Prefers 6.5 - 6.8 pH



Beets

Boro



Widely adapted and reliable. Smooth, rich red skin and excellent flavor.



Full sun



3” spacing
3” roots



Plant outside mid May



Harvest June - July



Prefers light, loamy soils
Prefers 6.2 - 6.8 pH
Prefers deeply cultivated raised beds
Pull at desired size, cut tops, wash, and store up to 6 months at 32°F and 95% humidity.



Beets

Chioggia



Medium-height tops are green with pink-striped stems. Excellent flavor.



Full sun



3” spacing
3” roots



Plant outside mid May



Harvest June - July



Prefers light, loamy soils
Prefers 6.2 - 6.8 pH
Prefers deeply cultivated raised beds
Pull at desired size, cut tops, wash, and store up to 6 months at 32°F and 95% humidity.

Quantity:
(packs of 6)

Quantity:
(packs of 6)

Quantity:
(packs of 6)

Quantity:
(packs of 6)



Beets

Formanova



Healthy, upright, and vigorous tops with neat and clean cylindrical roots. Great canning beet.



Full sun



3" spacing
3" roots



Plant outside mid May



Harvest June - July



Prefers light, loamy soils
Prefers 6.2 - 6.8 pH
Prefers deeply cultivated raised beds
Pull at desired size, cut tops, wash, and store up to 6 months at 32°F and 95% humidity.

Quantity:
(packs of 6)



Bok Choi

Asian Delight



Slow bolting white stem pac choi with dense, fully formed mini heads.



Full sun



4 - 6" spacing
4 - 6" tall



Plant outside mid May



Harvest June



Harvest at desired size by cutting entire plant at the base

Quantity:
(packs of 6)



Bok Choi

Bopak



Compact plants hosting densely growing, brilliant green leaves on striking white stems. Mild, succulent flavor.



Full sun



10 - 12" spacing
12 - 15" tall



Plant outside mid May



Harvest July



Harvest at desired size by cutting entire plant at the base

Quantity:
(packs of 6)



Bok Choi

Li Ren Choi



Baby green-stemmed pac choi with proportional, well filled-out heads.



Full sun



4 - 6" spacing
4 - 6" tall



Plant outside mid May



Harvest June



Harvest at desired size by cutting entire plant at the base

Quantity:
(packs of 6)



Broccoli

Covina

Upright, large-framed plants produce big, tightly beaded heads for reliable harvests.



Full sun



18 - 24" spacing
6 - 8" heads



Plant outside mid May



Harvest July - August



Prefers well drained, fertile soil
Prefers 6.0 - 7.5 pH
Ensure sufficient boron
Cut head when still tightly beaded, including a few inches of stem

Quantity:

(packs of 6)



Broccoli

Eastern Crown



Compact plants produce blue-green heads with small beads.



Full sun



12 - 24" spacing
6 - 8" heads



Plant outside mid May



Harvest July - August



Prefers well drained, fertile soil
Prefers 6.0 - 7.5 pH
Ensure sufficient boron
Cut head when still tightly beaded, including a few inches of stem

Quantity:

(packs of 6)



Cabbage

Caraflex

Uniform, pointed mini heads are tender and crunchy with a sweet, mild cabbage flavor.



Full sun



12 - 18" spacing
6 - 7" heads



Plant outside mid May



Harvest July - August



Prefers well drained, fertile soil
Prefers 6.5 - 7.5 pH
Remove large outer leaves and cut off of stem at base of head to harvest

Quantity:

(packs of 6)



Cabbage

Napa "Rubicon"



Full-size for cooking and kimchi. The flavor is sweet, tangy, juicy, and delicious!



Full sun



12-18" spacing
11" heads



Plant outside mid May



Harvest July



Prefers well drained, fertile soil
Prefers 6.5 - 7.5 pH
Harvest when heads are very firm
Stores 1 - 2 months at near freezing temperatures

Quantity:

(packs of 6)



Cabbage

Ruby Perfection



Fancy fall-storage red cabbage with dense, uniform heads.



Full sun



12 – 18” spacing
5 – 7” heads



Plant outside mid May



Harvest August



Prefers well drained, fertile soil
Prefers 6.5 - 7.5 pH
Remove large outer leaves and cut off of stem at base of head to harvest

Quantity:
(packs of 6)



Cabbage

Tendersweet



Great flavor for fresh use or light cooking; tender leaves are very thin, sweet, and crisp.



Full sun



12 – 18” spacing
8 – 9” heads



Plant outside mid May



Harvest July – August



Prefers well drained, fertile soil
Prefers 6.5 - 7.5 pH
Remove large outer leaves and cut off of stem at base of head to harvest

Quantity:
(packs of 6)



Chard

Rainbow



Glossy leaves and multicolored stems; the flavor varies by color but is milder than other chard.



Full sun



4 – 6” spacing
12 – 18” leaves



Plant outside mid May



Harvest July - August



Prefers loose, well drained soil
Prefers pH over 6.0
Harvest large outer leaves; inner leaves will continue growing

Quantity:
(packs of 6)



Corn

Popcorn – “Dakota Black”

Perfect rows of purple-black kernels make delicious popcorn.



Full sun



10 – 12” spacing
6 – 7’ height
5 – 6” ears



Plant outside late May



Harvest September - October



Needs deep, well-drained fertile soil
Prefers 6.0-6.8 pH
May need organic compost or a complete fertilizer
Dry ears in field and then inside

Quantity:
(packs of 6)



Corn

Popcorn – “Pennsylvania Dutch Butter Flavored”



Creamy, buttery and delicious- doesn't even need butter.



Full sun



10 – 12” spacing
8’ height
4 – 6” ears



Plant outside late May



Harvest September - October



Needs deep, well-drained fertile soil
Prefers 6.0-6.8 pH
May need organic compost or a complete fertilizer
Dry ears in field and then inside

Quantity:

(packs of 6)



Corn

Popcorn – “Robust”

High yielding yellow popcorn. A high percentage of kernels pop.



Full sun



10 – 12” spacing
8 – 9’ height
7 – 8” ears



Plant outside late May



Harvest September - October



Needs deep, well-drained fertile soil
Prefers 6.0-6.8 pH
May need organic compost or a complete fertilizer
Dry ears in field and then inside

Quantity:

(packs of 6)



Corn

Popcorn – “Tap Dancer”

Gorgeous popcorn with yellow, purple and white kernel coloration.



Full sun



10-12” spacing
9-10’ height
6.5” ears



Plant outside late May



Harvest September - October



Needs deep, well-drained fertile soil
Prefers 6.0-6.8 pH
May need organic compost or a complete fertilizer
Dry ears in field and then inside

Quantity:

(packs of 6)



Corn

Sweet Corn

Plump, juicy ears with exceptional flavor.



Full sun



6 – 7” spacing
8 – 9’ height
7 – 8” ears



Plant outside late May



Harvest August



Needs deep, well-drained fertile soil
Prefers 6.0-6.8 pH
May need organic compost or a complete fertilizer

Quantity:

(packs of 6)



Kale

Ethiopian Blue



Greens have a tender texture similar to Lacinato, with a sweet, mildly garlicky flavor. This variety was introduced by Ethiopian tech-worker turned farmer Menkir Tamrat.



Full sun



8 - 12" spacing
14 - 20" tall



Plant outside mid May



Harvest July - August



Prefers well drained, fertile soil
Prefers 6.0 - 7.5 pH
Harvest main stem with 8-10 leaves; lower shoots will continue growing

Quantity:
(packs of 6)



Kale

Lacinato - "Blackjack"



Dark, gorgeous blistered leaves have a sweet flavor.



Full sun



12 - 18" spacing
24 - 30" tall



Plant outside mid May



Harvest July - August



Prefers fertile, well drained soil
Prefers 6.0 - 7.5 pH
Break or cut off outer leaves at desired length

Quantity:
(packs of 6)



Kale

Russian - "Red Russian"



Smooth, green, purple-veined leaves, perfect for salads and light cooking.



Full sun



12 - 18" spacing
24 - 36" tall



Plant outside mid May



Harvest July - August



Prefers well drained, fertile soil
Prefers 6.0 - 7.5 pH
Break or cut off outer leaves at desired length

Quantity:
(packs of 6)



Kale

Scotch - "Darkibor"



Dark green, sturdy kale with tight curl.



Full sun



12 - 18" spacing
24 - 36" tall



Plant outside mid May



Harvest July - August



Prefers fertile, well drained soil
Prefers 6.0 - 7.5 pH
Break or cut off outer leaves at desired length

Quantity:
(packs of 6)



Leeks

Lancelot

Thick, uniform leeks with bolt resistance.



Full sun



6" spacing
24 – 36" tall



Plant outside mid May



Harvest September – October



Prefers fertile, well drained soil
Prefers 6.2 – 6.8 pH
Hill plants for longer stalks

Quantity:

(packs of 6)



Lettuce

Boston

Sturdy heads with thick, crisp leaves and a large, well-packed heart.



Full sun



8 - 12" spacing
8 – 10" heads



Plant outside mid May



Harvest July



Prefers cool, well drained, loose soil
Prefers 6.2 – 6.8 pH
Do not allow any leaves to be buried in soil when planting
Cut entire plant at base to harvest

Quantity:

(packs of 6)



Lettuce

Green Leaf

Uniform, dense heads are high-yielding with good flavor.



Full sun



8 - 12" spacing
8 – 10" heads



Plant outside mid May



Harvest July



Prefers cool, well drained, loose soil
Prefers 6.2 – 6.8 pH
Do not allow any leaves to be buried in soil when planting
Cut entire plant at base to harvest

Quantity:

(packs of 6)



Lettuce

Iceberg

Thick, crispy leaves that are sweet and refreshing, offering a classic iceberg taste.



Full sun



8 - 12" spacing
5 – 6" heads



Plant outside mid May



Harvest July



Prefers cool, well drained, loose soil
Prefers 6.2 – 6.8 pH
Do not allow any leaves to be buried in soil when planting
Cut entire plant at base to harvest

Quantity:

(packs of 6)



Lettuce

Red Butter

Red outer leaves and a beautiful bright green heart.



Full sun



8 - 12" spacing
7 - 9" heads



Plant outside mid May



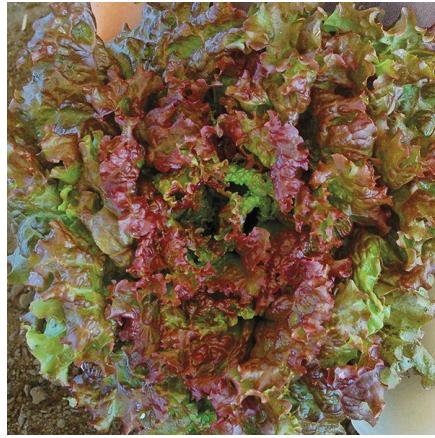
Harvest June - July



Prefers cool, well drained, loose soil
Prefers 6.2 – 6.8 pH
Do not allow any leaves to be buried in soil when planting
Cut entire plant at base to harvest

Quantity:

(packs of 6)



Lettuce

Red Leaf

Ruffled lettuce with colorful crisp heads.



Full sun



8 - 12" spacing
8 – 10" heads



Plant outside mid May



Harvest July



Prefers cool, well drained, loose soil
Prefers 6.2 – 6.8 pH
Do not allow any leaves to be buried in soil when planting
Cut entire plant at base to harvest

Quantity:

(packs of 6)



Lettuce

Romaine

Sweet lettuce great for heads, hearts, sandwich leaves, or 'taco boat' wraps.



Full sun



8 - 12" spacing
10" heads



Plant outside mid May



Harvest July



Prefers cool, well drained, loose soil
Prefers 6.2 – 6.8 pH
Do not allow any leaves to be buried in soil when planting
Cut entire plant at base to harvest

Quantity:

(packs of 6)



Okra

Catawba Freedman



This variety is thought to have been grown by black people, likely enslaved or formerly enslaved, living in Catawba Nation, a southeastern Indigenous nation. Flowers are edible.



Full sun



12 – 18" spacing
3 – 4" pods



Plant outside late May



Harvest July - August



Harvest pods at 3 – 4"

Quantity:

(2.5" pots)



Peas

Black Eyed Peas – “Ezelle Family Fish Eye”



Highly productive climbing pea stewarded by the Ezelle family; Ezelle women carried the seeds in their hair from Louisiana to Mississippi while enslaved.



Full sun



3 – 4” spacing
6’ vines
6 – 8” pods



Plant outside late May



Harvest August - September



Needs trellising/support
Allow pods to dry until brown
and crispy before harvesting

Quantity:

(packs of 6)



Peas

Black Eyed Peas – “Sea Island Red”



An important Gullah Geechee heirloom used in dishes such as Hoppin’ John. Delicious meaty flavor and creamy texture.



Full sun



3 – 4” spacing
6’ vines
6 – 8” pods



Plant outside late May



Harvest August - September



Needs trellising/support
Allow pods to dry until brown
and crispy before harvesting

Quantity:

(packs of 6)



Peas

Shelling

Reliable, high yielding pea with long pods. Incredibly sweet.



Full sun



1.5 – 2” spacing
24” vines
4 – 4.5” pods



Plant outside mid May



Harvest July



Needs trellising/support
Prefers 6.5 – 6.8 pH

Quantity:

(packs of 6)



Peas

Sugar Snap

Sweet, crisp pods on vigorous plants.



Full sun



1.5 – 2” spacing
72” vines
6 – 8” pods



Plant outside mid May



Harvest July



Needs trellising/support
Prefers 6.5 – 6.8 pH

Quantity:

(packs of 6)



Scallions

Parade



Very uniform scallions with white shanks and dark green foliage.



Full sun



6 – 8” spacing
12 – 18” height



Plant outside mid May



Harvest July – August



Prefers 6.2 – 6.8 pH
Hill plants for longer white section

Quantity:

(packs of 6)



Spinach



Vigorous, all season spinach with thick, glossy leaves that are smooth to slightly savoyed.



Full sun



2” spacing
2 – 5” leaves



Plant outside mid May



Harvest June



Prefers cool, moist soil
Prefers 6.0-7.5 pH
Cut entire plant to ground for harvest

Quantity:

(packs of 6)