

# Powisset Farm Plant Sale 2024

**May 10: 3 pm – 6 pm**

**May 11: 10 am – 3 pm**

**May 12: 10 am – 3 pm**

## Price List

2.5" pot: \$5

Pack of 4: \$5

Pack of 6: \$6

Potting Soil (5 gal)\*: \$10

**\*Bring your own 5 gallon bucket!**

## General Planting Notes:

“Hardening off” is a way to gradually prepare seedlings for planting outdoors. A few days before transplanting outdoors, start setting plants outside during the day for a few hours. At first, set them somewhere with no direct sunlight. Gradually increase the time the plants spend outside, move them to a sunnier area, and decrease the frequency with which they’re watered.

To plant a seedling, push in on the bottom of the plastic pot to pop out the block of soil containing the seedling. If necessary, invert the pot slightly or lightly tug on the stem of the plant to ease it from the tray. Tuck the soil block into a hole in moist soil where you’d like the plant to grow, covering the top of the soil block with soil from the surrounding ground. Many plants, such as tomatoes, appreciate having their entire stem covered up to the first set of leaves; this helps them to establish a strong footing. Lettuce and lavender should be planted shallowly so that the tops of their soil blocks line up with the ground.

## Specific Plant Requirements (listed for each variety):



### Sun levels:

Plants that require full sun should be planted where they receive no shade from surrounding objects for 6+ hours each day. Plants that require part shade should be planted where they receive 4 – 6 hours of sunlight per day.



### Spacing:

Adequate distance between plants makes for easier harvest and more access to vital nutrients, space, and light for the plants so that they grow more successfully. Spacing is defined between plants of the same type, as they would be planted in a bed at the farm. Some gardeners have success placing different types of plants together at closer distances, but in those cases it’s important to be mindful that the plants’ nutrient needs and growing styles don’t compete with one another.



### Planting dates:

Seedlings are typically planted either after danger of last frost (usually mid May) or once daily temperatures have evened out and reached the 60s – 70s (usually early June). Some more cold-hardy plants can be set out in early or mid May, as they are at lower risk of being damaged by frost. In case of an unexpected drop in temperatures after seedlings are planted, they may be covered with row cover or mulch may be applied around them to increase their chances of survival.



### Harvest dates:

Harvest dates are estimated based on the time it takes for each plant to reach maturity and the recommended date of transplanting. Since conditions vary greatly between gardens, it’s important to keep an eye out for signs of ripeness and harvest as soon as plants are ready- for some fast-growing plants like summer squash, the fruits will only be at their peak for a day or two!



### Growing notes:

Each plant has different requirements for soil type, tending, and harvest methods. In general, it’s always a good idea to water consistently and deeply, allowing the soil to drain between waterings. Adding organic matter like compost to soil is a good way to adjust its texture and pH to make it suitable for most plants; but soils with very high or low pH can also be adjusted with sulphur or agricultural lime (calcium carbonate).



# Flowers

## Harvesting Flowers:

For long lasting cut flowers, harvest when petals are not fully unfurled; they'll slowly open after harvest.

## Drying Flowers:

Some flowers can be dried by hanging them in a well ventilated area outside of direct sunlight. Note that a dried flower will hold the position it's in during drying, so flowers such as amaranth should be dried propped in an upright container to keep their draped appearance.

## Staking/Support:

Tall flowers may need to be loosely tied to a stake or trellis as they grow to prevent toppling. Their stems should be secured every 6 – 8 inches. Some other options for supporting flowers include horizontal netting installed about 18" off the ground, or twine strung between stakes about 3 feet off the ground.

## Deadheading:

To encourage more flowering and keep flowers from self-seeding, cut off each flower after it has bloomed and has become old or damaged. This should be done a little way down the stalk from the bloom, just above the highest healthy set of leaves.

## Growing Flowers in Later Years:

Although these flowers are not perennials, some will drop seeds if allowed to reach maturity and may self-sow, returning to your garden the next year. To prevent this, harvest or deadhead all flowers before they form seeds. Dahlia tubers can be saved over the winter and replanted the following year: in the fall, after plants have died back but before the ground freezes, cut plants back to 2-4" above the soil line and carefully dig tubers and remove excess soil. Let tubers cure for 1-3 days in a warm location with some humidity, out of direct sunlight with ample air flow. Pack tubers in peat or vermiculite inside perforated plastic bags, boxes or crates. Replant the next spring after danger of frost has passed.

## Symbol Key



Grows well in containers



Good for cut flower bouquets



Heat tolerant



Cold tolerant



Drought tolerant



Attracts beneficial insects



Fragrant



Easy to grow



Good for drying



Edible



Heirloom



## Ageratum

Timeless Mix



Long-lasting flower clusters attract bees and butterflies to the garden. Ideal for beds, containers, and cutting.



Full sun or part shade



9 - 12" spacing

24 - 30" height

1 - 2" flower clusters



Plant outside mid May



Blooms July - October



Prefers well drained, fertile soil

Prefers 5.0 - 6.0 pH

**Quantity:**

(packs of 6)



## Amaranth

Garnet Red



Large, beautiful plants with impressive red spires will grow steadily through the summer weather.



Full sun



4 - 8" spacing

6 - 8' height

12 - 24" flower spikes



Plant outside mid May



Blooms July - September



Needs staking/support

Prefers well drained soil

Prefers 6.0 - 7.0 pH

**Quantity:**

(packs of 6)



## Amaranth

Hopi Red Dye



Dark red flower heads are smaller and narrower than other amaranth types. Can be used to make a natural red dye.



Full sun



4 - 8" spacing

3 - 4' height

12 - 24" flower clusters



Plant outside mid May



Blooms July - September



Needs staking/support

Prefers well drained soil

Prefers 6.0 - 7.0 pH

**Quantity:**

(packs of 6)



## Amaranth

Velvet Curtains



Red, feathery plumes have lovely color and form for late summer and fall arrangements.



Full sun



4 - 8" spacing

6 - 8' height

12 - 24" flower spikes



Plant outside mid May



Blooms July - September



Needs staking/support

Prefers well drained soil

Prefers 6.0 - 7.0 pH

**Quantity:**

(packs of 6)





## Aster

Tower Mix



All the elegance and beauty of peonies and garden mums in an easy-to-grow annual. 13–20 stems per plant.



Full sun



6 - 12" spacing  
28 - 32" height  
2 - 3" flowers



Plant outside late May/  
early June



Blooms July - September



Needs staking/support  
Prefers well drained, fertile soil  
Prefers 5.5 - 7.5 pH

**Quantity:**

(packs of 6)



## Bachelor's Buttons

Polka Dot



A wonderful cut flower and bedding plant in diverse shades of blue, pink, white and lavender.



Full sun



6 - 9" spacing  
16 - 24" height  
2" flowers



Plant outside mid May



Blooms June - July



Needs staking/support  
Tolerates poor soil  
Prefers well drained soil  
Prefers cool temperatures  
May self-seed and spread

**Quantity:**

(packs of 6)



## Bells of Ireland



Long stems covered with apple-green, bell-shaped calyxes centered with tiny, white blooms. Blooms have a lovely, sour-apple scent.



Full sun or part shade



10 - 12" spacing  
24 - 48" height  
2" calyxes



Plant outside mid May



Blooms June - July



Needs staking/support  
Prefers well drained soil

**Quantity:**

(packs of 6)



## Calendula

Alpha



High resin content for medicinal use. Also edible; remove the petals from the flower base before consuming as the base can be bitter.



Full sun or part shade



6 - 12" spacing  
24 - 30" height  
2 - 3.5" flowers



Plant outside mid May



Blooms June - October



Prefers well drained, fertile soil  
Prefers cool temperatures

**Quantity:**

(packs of 6)



## Calendula

Flashback Mix



The undersides of the petals are a muted burgundy. Petals are edible; remove the petals from the flower base before consuming as the base can be bitter.



Full sun or part shade



6 - 12" spacing  
18 - 24" height  
1.5 - 3" flowers



Plant outside mid May



Blooms June – October



Prefers well drained, fertile soil  
Prefers cool temperatures

**Quantity:**

(packs of 6)



## Calendula

Pacific Beauty



Continuous blooms all summer. Petals are edible; remove the petals from the flower base before consuming as the base can be bitter.



Full sun or part shade



8 - 12" spacing  
12 - 24" height  
1.5 - 3" flowers



Plant outside mid May



Blooms June - October



Prefers well drained, fertile soil  
Prefers cool temperatures

**Quantity:**

(packs of 6)



## Celosia

Flamingo Feather



Easy-to-grow, pale pink and rose spikes have a silvery shimmer.



Full sun



6 - 12" spacing  
24 - 36" height  
2 - 3" flower spikes



Plant outside mid May



Blooms July - September



Prefers well drained, fertile soil  
Prefers moist soil  
Prefers 6.0 – 7.0 pH

**Quantity:**

(packs of 6)



## Celosia

Ruby Parfait



Dark rose flower spikes on full, branching plants are long-lasting and sturdy in bouquets or boutonnieres.



Full sun



6 - 12" spacing  
24 - 26" height  
2 - 3" flower spikes



Plant outside mid May



Blooms July - September



Prefers well drained, fertile soil  
Prefers moist soil  
Prefers 6.0 – 7.0 pH

**Quantity:**

(packs of 6)





## Celosia

Supercrest Mix



Each shiny, fan shaped bloom is a distinctive work of art, with an individual texture, color and shape all its own. Will produce blooms all season long.



Full sun

12 - 18" spacing  
36 - 48" height  
2 - 5" flower spikes



Plant outside mid - late May



Blooms July - September



Prefers well drained, fertile soil  
Prefers 6.0 - 7.0 pH

**Quantity:**

(packs of 6)



## Cosmos

Bright Lights



Easy-to-grow, vigorous plants flower over a long season. Flowers are also used to create natural dyes.



Full sun



9 - 12" spacing  
24 - 48" height  
1.5 - 2.5" flowers



Plant outside mid May



Blooms July - September



Tolerates poor soil  
Deadheading recommended  
May self-seed and spread

**Quantity:**

(packs of 6)



## Cosmos

Double Click



Tall plants with large, fully-double and semidouble blooms in a range of colors.



Full sun



9 - 12" spacing  
42 - 46" height  
1.5 - 2.5" flowers



Plant outside mid May



Blooms July - September



Tolerates poor soil  
Deadheading recommended  
May need wind protection  
May self-seed and spread

**Quantity:**

(packs of 6)



## Cosmos

Sensation Mix



Sensational blend of showy white, pink, magenta and lavender blooms. Tall stems great for cutting.



Full sun



9 - 12" spacing  
3 - 4' height  
3 - 4" flowers



Plant outside mid May



Blooms July - September



Tolerates poor soil  
Deadheading recommended  
May need wind protection  
May self-seed and spread

**Quantity:**

(packs of 6)



## Dahlia

Giant Hybrid



A mix of double, semidouble, and single blooms; both solid and bicolor. Both flowers and tubers are edible; mild-flavored flowers are great as garnish.



Full sun



9 - 12" spacing  
40 - 60" height  
3 - 5" flowers



Plant outside early - mid June



Blooms August - October



Tubers can be saved over winter

Quantity:  
(packs of 6)



## Dianthus

Volcano Mix



Blooms have a sweet fragrance. Edible petals taste of mild clove. Remove petals from the flower base before consuming as the base can be bitter.



Full sun



6" spacing  
16 - 24" height  
2 - 4.5" flowers



Plant outside mid May



Blooms June - August



Prefers rich, well-drained soil  
Prefers cool temperatures  
Prefers slightly alkaline soil

Quantity:  
(packs of 6)



## Gomphrena

Quality in Seed Mix



Beautiful mix of long-lasting globe shaped flowers. Plants grow into a dense, bush habit which makes for easy maintenance.



Full sun



6 - 8" spacing  
18 - 28" height  
1.5" flowers



Plant outside mid May



Blooms July - October



Prefers well-drained soil

Quantity:  
(packs of 6)



## Ornamental Grasses

Feathertop



Tall plants with large, fully-double and semidouble blooms in a range of colors.



Full sun



9 - 12" spacing  
42 - 46" height  
1.5 - 2.5" flowers



Plant outside late May/early June



Blooms July - October



Deadheading recommended  
May need wind protection  
May self-seed and spread

Quantity:  
(packs of 6)





## Ornamental Grasses

Frosted Explosion



Airy flower plumes add sparkle to bouquets and landscapes. A productive filler for bouquets, and a carefree bedding plant.



Full sun



10 - 12" spacing

24 - 32" height

6 - 10" flower spikes



Plant outside mid May



Blooms July - October



Prefers well-drained soil

Quantity:  
(packs of 6)



## Marigold

Coco Gold



Sturdy plants produce abundant, fully double blooms useful for marigold garlands. Edible petals have hints of citrus and spice, and are slightly bitter.



Full sun



12 - 18" spacing

36 - 42" height

2.5 - 3" flowers



Plant outside mid May



Blooms June - October



Deadheading recommended  
Prefers moderately fertile soil  
Growth stalls in very high heat  
Prefers 6.0 - 7.5 pH

Quantity:  
(packs of 6)



## Marigold

Durango Outback Mix



Full sun



8 - 12" spacing

8 - 12" height

2 - 2.5" flowers



Plant outside mid May



Blooms June - October



Deadheading recommended  
Prefers moderately fertile soil  
Growth stalls in very high heat  
Prefers 6.0 - 7.5 pH

Quantity:  
(packs of 6)



## Marigold

Giant Orange



Prolific flowers on tall, strong stems are useful for bouquets and marigold garlands. Edible petals have hints of citrus and spice, and are slightly bitter.



Full sun



12 - 18" spacing

36 - 40" height

3" flowers



Plant outside mid May



Blooms June - October



Deadheading recommended  
Prefers moderately fertile soil  
Growth stalls in very high heat  
Prefers 6.0 - 7.5 pH

Quantity:  
(packs of 6)



## Nigella



Jewel-like fresh cut flowers bring an old-fashioned charm to bouquets. Unusual and attractive seed pods can be dried for ornamental arrangements.



Full sun



2 - 9" spacing  
12 - 28" height  
1.5 - 2" flowers



Plant outside mid May



Blooms June - July



Prefers well-drained soil



## Rudbeckia



Easy to grow, vigorous plants offer seemingly endless blooms over a long harvest window. Stems are multi-branching and sturdy.



Full sun or part shade



18 - 24" spacing  
32 - 46" height  
4 - 6" flowers



Plant outside mid May



Blooms July - September



Prefers moderately fertile soil  
May self-seed and spread



## Scabiosa

Pincushion Mix



Full sun



9 - 15" spacing  
24 - 36" height  
1.5 - 2.5" flowers



Plant outside mid May



Blooms July - October



Needs staking/support  
Prefers rich, well-drained soil  
May self-seed and spread



## Snapdragon

Lion's Mouth Blend



Gorgeous blend of bold and pastel colored flowers bloom continuously through the summer, especially with trimming. Edible but bitter.



Full sun or part shade



8 - 10" spacing  
12 - 24" height  
5 - 9" flower spikes



Plant outside mid May



Blooms June - July,  
September - October



Prefers rich, well-drained soil  
Prefers moist soil  
Prefers pH neutral soil

Quantity:  
(packs of 6)

Quantity:  
(packs of 6)

Quantity:  
(packs of 6)

Quantity:  
(packs of 6)



## Statice

Pastel Mix



Productive plants with strong stems.  
Long-lasting when cut, and yields multiple cuts throughout the season.  
Easy to dry and holds its color well.



Full sun



12" spacing  
24 - 30" height  
1.5 - 3" flower clusters



Plant outside mid May



Blooms July - September



Prefers rich, well-drained soil

**Quantity:**

(packs of 6)



## Strawflower

Monstrosum Tall Mix



Vigorous mix of brilliant flowers on tall, sturdy stems.



Full sun



10 - 12" spacing  
36 - 40" height  
1.5 - 3" flowers



Plant outside mid May



Blooms July - October



Deadheading recommended  
May need staking/support  
Prefers moderately fertile soil  
Prefers well-drained soil

**Quantity:**

(packs of 6)



## Strawflower

Roggli Riesen



Bright and varied colorful flowers on tall plants offer texture and color for many months after harvest. Flowers are best cut when they are in bud.



Full sun



12 - 18" spacing  
30 - 36" height  
2 - 2.5" flowers



Plant outside mid May



Blooms July - October



Deadheading recommended  
May need staking/support  
Prefers moderately fertile soil  
Prefers well-drained soil

**Quantity:**

(packs of 6)



## Strawflower

Vintage White



Tall, well-branched plants produce many pure white, double flowers.



Full sun



10 - 12" spacing  
36 - 40" height  
2 - 2.5" flowers



Plant outside mid May



Blooms July - October



Deadheading recommended  
May need staking/support  
Prefers moderately fertile soil  
Prefers well-drained soil

**Quantity:**

(packs of 6)



## Tithonia



Vigorous and full plant blooms well into fall, providing nectar and habitat to beneficial insects.



Full sun



12 - 24" spacing  
60 - 72" height  
3 - 3.5" flowers



Plant outside early - mid June



Blooms July - October



Deadheading recommended  
Prefers fertile loam or sandy soil  
Prefers well-drained soil  
Tolerates poor, dry soil  
Avoid excess nitrogen

**Quantity:**

(packs of 6)



## Zinnia

Benary's Giant Mix



Vigorous all-season producers hold up well in summer rain and heat. Densely petaled blooms are long-lasting in bouquets and yield multiple cuts over the season.



Full sun



9 - 12" spacing  
40 - 50" height  
3 - 6" flowers



Plant outside mid May



Blooms July - October



Deadheading recommended  
Prefers rich soil  
Prefers 6.3 - 6.8 pH

**Quantity:**

(packs of 6)



## Zinnia

Cactus Flowered Mix



Large blooms with quilled petals. Cut-and-come-again flower, yielding multiple cuts over the season.



Full sun



9 - 12" spacing  
28 - 40" height  
3 - 6" flowers



Plant outside mid May



Blooms July - October



Deadheading recommended  
Prefers rich soil  
Prefers 6.3 - 6.8 pH

**Quantity:**

(packs of 6)



## Zinnia

County Fair Blend



Blooms until frost; heat and disease tolerant. Keep cut flowers out of direct sunlight and change the water in the vase every two days.



Full sun



9 - 12" spacing  
24 - 36" height  
2 - 5" flowers



Plant outside mid May



Blooms July - October



Deadheading recommended  
Prefers rich soil  
Prefers 6.3 - 6.8 pH

**Quantity:**

(packs of 6)



## Sunflower

Firecracker



Dwarf, branching plants loaded with red and gold flowers.



Full sun



8 - 12" spacing  
36 - 46" height  
5 - 7" flowers



Plant outside mid May



Blooms July – September



Prefers light, well drained soil  
Adaptable to low/moderate  
fertility soil

**Quantity:**

(packs of 6)



## Sunflower

Selma Suns



Polyheading blooms. Heads have small dark centers, pointed petals, and display various hues and shades; many are multicolored.



Full sun



12" spacing  
6 – 7' height  
6" flowers



Plant outside mid May



Blooms July – September



May self-seed and spread

**Quantity:**

(packs of 6)



## Sunflower

Solano Double



Single-stem, double “teddy bear”  
type blooms.



Full sun



4 - 6" spacing  
50 – 60" height  
4 - 7" flowers



Plant outside mid May



Blooms July – September



Prefers light, well-drained soil  
Avoid excess nitrogen

**Quantity:**

(packs of 6)



# Herbs

## Perennial Herbs:

Many herbs can last multiple seasons if properly cared for and overwintered. As a general rule, harvest perennial herbs sparingly the first year, taking only a few leaves or the tips of sprigs. In later years, the plant can be harvested by cutting entire sprigs a few inches from the ground. After 2-4 years, perennial herbs may grow woody and can be replaced. Especially delicate perennials such as rosemary should be given extra protection during the winter by cutting the entire plant down to a few inches above the ground and covering the stub with 4-6 inches of mulch.

## Harvesting Herbs:

The harvest season of many herbs can be prolonged by harvesting regularly before the plants are able to bloom. In some cases the entire plant is cut down to near ground level; for a more delicate harvest, stems should be pinched off just above a large, healthy set of leaves.

## Drying Herbs:

Some herbs, such as sage, can be dried by hanging small bundles upside down in a well ventilated area outside of direct sunlight.

## Symbol Key



Grows well in containers



Good for cut flower bouquets



Attracts beneficial insects



Fragrant



Easy to grow



Good for drying



## Basil

Prospera



Fast-growing, classic Genovese basil with 3" long glossy leaves. Do not refrigerate harvested basil.



Full sun



4 - 8" spacing  
20 - 24" height



Plant outside mid May



Harvest June - October



Moderately rich, moist soil  
Water regularly  
Begin light harvesting in cool morning temperatures, after plants are established  
Just before flowering, cut entire plant 4-6" above ground for second growth

**Quantity:**

(2.5" pots)



## Basil

Red Rubin



Dark purple Italian Large Leaf type (3" leaves) with high yields and great flavor. Flowers and leaves make an attractive garnish. Do not refrigerate harvested basil.



Full sun



4 - 8" spacing  
18 - 24" height



Plant outside mid May



Harvest June - October



See growing notes for Prospera basil at left

**Quantity:**

(packs of 6)



## Borage



Large plants bear hundreds of edible cucumber-flavored flowers, mostly blue and some pink. Add flowers to salads, use as garnish, or freeze in ice cubes.



Full sun



12" spacing  
18 - 30" height  
1" flowers



Plant outside mid May



Harvest July - October



Tolerates poor soil  
May self-seed and spread

**Quantity:**

(2.5" pots)



## Cilantro



Like the leaves and seeds, the flowers are also edible. If allowed to flower, provides pollen and nectar for beneficial insects.



Full sun



3" spacing  
12 - 18" height



Plant outside mid May



Harvest leaves June - July;  
seeds August - October



Prefers rich, well drained soil  
Harvest leaves once plants are established, before flowering.  
Harvest seeds fresh as they form, or when brown and dry.

**Quantity:**

(2.5" pots)



## Chamomile

Common



Tea made from the flowers aids digestion and acts as a gentle sleep inducer. Also edible as garnish; slightly sweet.



Full sun



8" spacing  
15 - 24" height  
0.5 - 1" flowers



Plant outside mid May



Blooms June - October



Prefers well drained, fertile soil  
Prefers sandy loam  
May self-seed and spread

**Quantity:**

(packs of 6)



## Chives



Quick growing, medium to full-size leaves and edible flowers excellent for dressing up soups or as a garnish.



Full sun or part shade



4 - 8" spacing  
12 - 18" height  
1" flowers



Plant outside mid May



Harvest June - October



Prefers rich, high humus soil  
Cut to ground level to harvest  
Hardy as a perennial

**Quantity:**

(2.5" pots)



## Dill

Bouquet



Large, early blooms on long stems are great for cut-flower use and pickling. Flowers can be used as garnish or broken into florets and mixed into foods as seasoning.



Full sun



2 - 4" spacing  
30" height  
6" flower umbels



Plant outside mid May



Harvest leaves June - July;  
seeds August - October



Tolerates poor soil  
Prefers rich, light soil

**Quantity:**

(2.5" pots)



## Lavender

Ellagance Purple



Winter hardy plants. Edible flowers' sweet flavor pairs well with citrus, berries, nuts, mint, and cinnamon.



Full sun



12 - 18" spacing  
12 - 18" height  
2" flower spikes



Plant outside mid May



Blooms July - August



Prefers 6.5 - 8.3 pH  
Gravelly, light, well-drained soil  
Protected, south facing area  
Plant shallowly  
Cut back and mulch in fall

**Quantity:**

(2.5" pots)





## Oregano

Greek



Strong aroma and flavor. Dark green leaves, with white flowers that can be eaten like the leaves.



Full sun or part shade



12" spacing  
8 – 24" height



Plant outside mid - late May



Harvest August - October



Prefers well drained, sandy soil  
Cut 2" above base of plant to harvest; harvest stems just as they begin blooming  
Multiple harvests per season  
Hardy as a perennial

**Quantity:**

(2.5" pots)



## Parsley

Giant of Italy



The preferred culinary variety. Huge, dark green leaves on strong, upright stems. Very high yielding.



Full sun



8 - 12" spacing  
18 – 20" height



Plant outside mid - late May



Harvest August - October



Prefers moist, fertile soil  
Can be overwintered for an early spring harvest  
Harvest leaves as needed

**Quantity:**

(2.5" pots)



## Rosemary



Pine-scented, savory, culinary favorite. Silvery, needle-like foliage and delicate flowers that can be eaten fresh for garnish.



Full sun



8 - 10" spacing if grown as an annual; 24 – 36" perennial  
18 - 60" height



Plant outside mid May



Harvest August - October



Prefers light, well drained soil  
Hardy as a perennial if mulched  
Harvest stem tips at first, then cut whole sprigs once mature

**Quantity:**

(2.5" pots)



## Sage



Dusty, green leaves are used for seasoning and make a good base for dried floral wreaths. Edible flowers.



Full sun or part shade



12" spacing  
16 – 30" height



Plant outside mid May



Harvest August - October



Prefers sufficient nitrogen  
Prefers well drained soil  
Hardy as a perennial  
Harvest individual leaves during the first year; in later years, cut stems 6" from base as flowers start to open

**Quantity:**

(2.5" pots)



## Thyme

German Winter



Good flavor and yield. Edible flowers.



Full sun or part shade



6 - 8" spacing  
6 - 12" height



Plant outside mid May



Harvest September - October



Light, dry, well drained soil  
Hardy as a perennial  
Harvest only a few stems the first year; in later years, cut stems 4 - 5" from base as flowers start to open

**Quantity:**

(2.5" pots)



# Peppers

## Mulching Peppers:

Peppers prefer warm soil, which can be achieved early in the season with a dark mulch such as black plastic or landscape fabric. Other mulches may be applied once soil temperatures have warmed up, as they may limit soil's ability to warm up quickly in the spring. Mulch will also help the soil stay moist.

## Watering Peppers:

Peppers should be watered regularly, but caution should be taken to avoid letting the leaves of the plants stay wet for long periods of time; using drip irrigation or watering in the morning can help.

## Harvesting Peppers:

If harvesting peppers green, they should be picked when they reach the desired size; if another color is the goal, wait until the peppers have fully colored on the plant before picking. Peppers can be gently pulled at an angle so that they snap off at the stem. Note that some hot peppers, like Padron, will be mild up to a certain size, then turn hot- so be sure to pick them at the desired stage!

## Symbol Key



Grows well in containers



Good for canning



Easy to grow



Good for drying



Heirloom



Mild heat



Extreme heat



## Hot Pepper

Anaheim "Highlander"



Early maturing, rigorous pepper. Plants are tall and large, providing excellent support for the prolific yields of peppers.



Full sun



12 - 18" spacing  
30" height  
6 - 7" x 2" fruit



Plant outside early June



Harvest July - September



Prefers well-drained, fertile soil  
Prefers 6.5 - 6.8 pH  
Prefers plenty of phosphorus and calcium

**Quantity:**

(packs of 4)



## Hot Pepper

Cayenne "Red Rocket"



Early, quick-drying for ristras. Thin-walled, attractive fruits are bright red both fresh and dried. Flavor is sweet and hot.



Full sun



12 - 18" spacing  
30" height  
5 - 6" fruit



Plant outside early June



Harvest July - September



Prefers well-drained, fertile soil  
Prefers 6.5 - 6.8 pH  
Prefers plenty of phosphorus and calcium

**Quantity:**

(packs of 4)



## Hot Pepper

Guajillo "El Eden"



This pepper is for Mexican mole. A high yielding hot pepper excellent for drying and making powder. Skins are tough so not recommended for fresh eating.



Full sun



18" spacing  
30" height  
7 - 8" fruit



Plant outside early June



Harvest September



Prefers well-drained, fertile soil  
Prefers 6.0 - 6.8 pH  
Prefers plenty of phosphorus and calcium

**Quantity:**

(packs of 4)



## Hot Pepper

Habanero



Traditional heat with fruity citrus notes; pungent, wrinkled fruits ripen to salmon orange. A key ingredient in Jamaican "jerk" sauces.



Full sun



12 - 18" spacing  
30" height  
2 x 1.25" fruit



Plant outside early June



Harvest August - September



Prefers well-drained, fertile soil  
Prefers 6.5 - 6.8 pH  
Prefers plenty of phosphorus and calcium

**Quantity:**

(packs of 4)



## Hot Pepper

Hungarian Hot Wax



Moderately spicy fruits mature from pale yellow to orange red, and finally, to a vibrant red. Excellent for frying, roasting, or pickling.



Full sun



12 - 18" spacing  
30" height  
5.5" x 1.5" fruit



Plant outside early June



Harvest July - September



Prefers well-drained, fertile soil  
Prefers 6.5 – 6.8 pH  
Prefers plenty of phosphorus and calcium

**Quantity:**

(packs of 4)



## Hot Pepper

Jalapeño "Jalafuego"



Vigorous plants produce high yields of dark green fruits that are resistant to checking (small cracks in skin).



Full sun



12 - 18" spacing  
30" height  
3.5 - 4" fruit



Plant outside early June



Harvest August - September



Prefers well-drained, fertile soil  
Prefers 6.5 – 6.8 pH  
Prefers plenty of phosphorus and calcium

**Quantity:**

(packs of 4)



## Hot Pepper

Bishop's Crown "Mad Hatter"



Big, bushy plants. Moderately sweet flesh with floral and citrus notes and a touch of heat near the seed cavity.



Full sun



12 - 18" spacing  
30" height  
2.25" fruit



Plant outside early June



Harvest August - September



See growing notes for Jalapeño

**Quantity:**

(packs of 4)



## Hot Pepper

Padron



1 out of 20 fruits will be hot, the rest mild. Fruits all become hot if allowed to grow 2–3" long. Typically sautéed in olive oil with a little sea salt and eaten as tapas in Spain.



Full sun



12 - 18" spacing  
30" height  
1 - 1.5" fruit



Plant outside early June



Harvest July - September



See growing notes for Jalapeño  
Harvest when peppers are 1 – 1.5" long

**Quantity:**

(packs of 4)



## Hot Pepper

Poblano “Bastan”



Fruits are dark green, nearly black, maturing to a deep chocolate with mild heat. Extremely high yielding. Delicious roasted, stuffed, battered and fried - try them stuffed with smoked gouda and grilled!



Full sun



12 - 18” spacing  
30” height  
4 - 5” fruit



Plant outside early June



Harvest August - September



See growing notes for Jalapeño

**Quantity:**

(packs of 4)



## Hot Pepper

Serrano “Santo Domingo”



Serranos have a bright, grassy flavor and are a bit hotter than jalapeños. Similar in culinary use to jalapeños and great in hot sauces.



Full sun



12 - 18” spacing  
30” height  
4.5 - 5” fruit



Plant outside early June



Harvest July - September



Prefers well-drained, fertile soil  
Prefers 6.5 – 6.8 pH  
Prefers plenty of phosphorus  
and calcium

**Quantity:**

(packs of 4)



## Hot Pepper

Shishito



1 out of 20 fruits will be hot, the rest mild. Particularly suitable for tempura, and very good roasted, in stir-fries, or sautéed. In Asia, the fruits are always cooked green, but they may also be used when red and slightly sweet.



Full sun



12 - 18” spacing  
30” height  
3 – 3.5” fruit



Plant outside early June



Harvest July – September



See growing notes for Serrano

**Quantity:**

(packs of 4)



## Sweet Pepper

Ace



Huge, early yields; nearly every flower produces a pepper.



Full sun



12 - 18” spacing  
30” height  
4” fruit



Plant outside early June



Harvest July - September



Prefers well-drained, fertile soil  
Prefers 6.5 – 6.8 pH  
Prefers plenty of phosphorus  
and calcium

**Quantity:**

(packs of 4)



## Sweet Pepper

Carmen

Best-tasting Italian Corno di Toro (or "Bull's Horn") type frying pepper. Early, adaptable, and notably sweet. Excellent roasted, grilled, and in salads.



Full sun



12 - 18" spacing  
30" height  
6" x 2.5" fruit



Plant outside early June



Harvest August - September



Prefers well-drained, fertile soil  
Prefers 6.5 – 6.8 pH  
Prefers plenty of phosphorus and calcium

Quantity:

(packs of 4)



## Sweet Pepper

Cornito Rosso



Very early, sweet, and attractive. Perfect for grilling and roasting. Known as a kapia type in Europe, where it is quite popular.



Full sun



12 - 18" spacing  
30" height  
5" x 1 - 1.5" fruit



Plant outside early June



Harvest July - September



Prefers well-drained, fertile soil  
Prefers 6.5 – 6.8 pH  
Prefers plenty of phosphorus and calcium

Quantity:

(packs of 4)



## Sweet Pepper

Cubanelle

Excellent for frying; usually used when unripe and light green, but can also be used red. Very popular in Caribbean cooking.



Full sun



12 - 18" spacing  
30" height  
7 - 8" x 2.5" fruits



Plant outside early June



Harvest July - September



Prefers well-drained, fertile soil  
Prefers 6.5 – 6.8 pH  
Prefers plenty of phosphorus and calcium

Quantity:

(packs of 4)



## Sweet Pepper

King of the North

Reliable set of green to glossy red fruits in short seasons. Strong plants support heavy yields.



Full sun



12 - 18" spacing  
30" height  
3 - 4" fruits



Plant outside early June



Harvest July - September



Prefers well-drained, fertile soil  
Prefers 6.5 – 6.8 pH  
Prefers plenty of phosphorus and calcium

Quantity:

(packs of 4)



## Sweet Pepper

Lunchbox Yellow



These beautiful, mini-sized peppers are delicious sautéed, as an addition to salads, and perfect for a healthy snack. Sweet, fruity-flavored peppers on tall, strong plants.



Full sun



12 - 18" spacing  
30" height  
2.5 - 3" x 1.5" fruits



Plant outside early June



Harvest August - September



Prefers well-drained, fertile soil  
Prefers 6.5 – 6.8 pH  
Prefers plenty of phosphorus and calcium

**Quantity:**  
(packs of 4)



## Sweet Pepper

Red Knight

Big, blocky fruits are early to turn red. Flavor is fruity and sweet.



Full sun



12 - 18" spacing  
30" height  
7 - 8" x 2.5" fruits



Plant outside early June



Harvest July - September



Prefers well-drained, fertile soil  
Prefers 6.5 – 6.8 pH  
Prefers plenty of phosphorus and calcium

**Quantity:**  
(packs of 4)





# Tomatoes and Tomatillos

## Mulching and Watering Tomatoes:

See notes for peppers above.

## Harvesting Tomatoes:

Tomatoes can be harvested before they are fully colored and will ripen off the vine; they should pull off the vine with a tug. Cherry tomatoes can split very easily; harvesting them with the green calyxes attached can help prevent splitting. This can be done by bending them off at the joint where the calyx meets the vine.

## Staking Tomatoes:

Most tomatoes need strong supports to climb on. On the farm, we drive stakes along our tomato beds, then weave twine horizontally between them to secure the plants. Twine layers are placed every 8 - 12" all the way up the height of the stakes. Other types of trellising can also work; but in every case the plants should be secured to their supports at regular intervals up to the height of the plant.

## Determinate and Indeterminate Tomatoes:

Many common tomato varieties are "indeterminate," meaning they are vining types that set fruit continually throughout the season. "Determinate" plants, on the other hand, stop growing once they reach a certain size, and set all of their fruit at once. Determinate plants typically need little or no pruning.

## Pruning Indeterminate Tomatoes:

Tomatoes need plenty of airflow and light. Pruning removes the "suckers" from the plants before they turn into a tangle of new branches, blocking this air and light. "Suckers" are the branches that form in the leaf axils, where the main leaves meet the main stem. Once the plants begin showing flowers, use clean hands or clean clippers to remove all suckers, except for the one just below the lowest flower/fruit cluster. Repeat every week or two, up until 1 - 2 weeks before the first expected tomato harvest.

## Symbol Key



Grows well in containers



Heat tolerant



Easy to grow



Good for sauces / canning



Heirloom



Indeterminate



Determinate



## Husk Cherry

Goldie



Plants are branching and prolific. Sweet, tropical tasting fruits can be eaten raw, dried like raisins, frozen, canned, or made into desserts.



Full sun



18 - 24" spacing  
1.5 - 3' height  
0.5 - 0.75" fruit



Plant outside early June



Harvest August - October



May need staking/support  
Harvest fallen fruit or fruit that detaches easily, with dry husks

Quantity:

(2.5" pots)



## Tomatillo

De Milpa



In Mexico, these grow unattended in family cornfields. Fruits store for several weeks, handy for fresh salsa.



Full sun



24 - 36" spacing  
Up to 5' height  
1.5 - 2" fruits



Plant outside early June



Harvest August - October



May need staking/support  
Plant deeply  
Harvest when husks split but fruit is still firm

Quantity:

(2.5" pots)



## Tomatillo

Toma Verde



Early variety with tart flavor when young, becoming sweeter as it ripens. Perfect for Salsa Verde.



Full sun



24 - 36" spacing  
Up to 5' height  
2" fruits



Plant outside early June



Harvest July - October



See growing notes for De Milpa

Quantity:

(2.5" pots)



## Cherry Tomato

Black Cherry



Sweet, robust, purple-brown fruits are regarded as one of the best-tasting tomatoes. High-yielding.



Full sun



24 - 36" spacing  
Height depends on trellising  
1" fruits



Plant outside late May



Harvest July - October



Requires trellising  
Prefers medium-rich soil  
Prefers 6.0 - 6.8 pH  
Avoid excess nitrogen  
Pruning recommended

Quantity:

(2.5" pots)



## Cherry Tomato

Gold Nugget

**D**

Early, prolific cherry tomatoes on healthy, compact plants. Flavor is well-balanced and delicious, and most early fruits are seedless.



Full sun



12 - 24" spacing  
3 - 4' height  
1" fruits



Plant outside late May



Harvest July - October



May need staking/support  
Prefers medium-rich soil  
Prefers 6.0 - 6.8 pH  
Avoid excess nitrogen

**Quantity:**

(2.5" pots)



## Cherry Tomato

Jasper

**I**

Excellent texture; all the flavor of a full-sized tomato. Prolific plants stay healthy for a long harvest window.



Full sun



24 - 36" spacing  
Height depends on trellising  
0.5 - 0.75" fruit



Plant outside late May



Harvest July - October



Requires trellising  
Prefers medium-rich soil  
Prefers 6.0 - 6.8 pH  
Avoid excess nitrogen  
Pruning recommended

**Quantity:**

(2.5" pots)



## Cherry Tomato

Juliet

**I** 

Delicious, rich tomato flavor, fresh or cooked. Typically 12-18 fruits per cluster.



Full sun



24 - 36" spacing  
Height depends on trellising  
2 - 2.25" x 1.5" fruits



Plant outside late May



Harvest July - September



See growing notes for Jasper

**Quantity:**

(2.5" pots)



## Cherry Tomato

Matt's Wild Cherry

**I** 

Full-flavored, soft fruits with a high sugar content. Fantastic in salsa and for fresh eating. These tomatoes grow wild in Eastern Mexico.



Full sun



24 - 36" spacing  
Height depends on trellising  
0.5 - 0.75" fruits



Plant outside late May



Harvest July - October



See growing notes for Jasper

**Quantity:**

(2.5" pots)



## Cherry Tomato

Pink Bumble Bee



Excellent sweet flavor. Vigorous plants perform under tough conditions.



Full sun



24 - 36" spacing

Height depends on trellising  
1 - 1.25" fruits



Plant outside late May



Harvest July - October



Requires trellising  
Prefers medium-rich soil  
Prefers 6.0 - 6.8 pH  
Avoid excess nitrogen  
Cover soil with dark mulch for warmth  
Pruning recommended

**Quantity:**

(2.5" pots)



## Cherry Tomato

Pink Champagne



Plants are productive and less vining than other cherries. Packs the flavor of a large tomato in a small size.



Full sun



24 - 36" spacing

Height depends on trellising  
1" fruit



Plant outside late May



Harvest July - October



See growing notes for Pink Bumble Bee

**Quantity:**

(2.5" pots)



## Cherry Tomato

Purple Bumble Bee



An eye-catching combination of the dusky purple seen in heirloom tomatoes and metallic green striping. Sweet flavor and meaty texture. Vigorous plants perform under tough conditions.



Full sun



24 - 36" spacing

Height depends on trellising  
1 - 1.25" fruit



Plant outside late May



Harvest July - October



See growing notes for Pink Bumble Bee

**Quantity:**

(2.5" pots)



## Cherry Tomato

Sungold



Exceptionally sweet, intense fruity flavor can't be beat. Vigorous plants start yielding early and bear right through the season. Tendency to split precludes shipping, making these an exclusively fresh-market treat.



Full sun



24 - 36" spacing

Height depends on trellising  
1 - 1.25" fruit



Plant outside late May



Harvest July - October



See growing notes for Pink Bumble Bee

**Quantity:**

(2.5" pots)



## Cherry Tomato

Verona

I

Delicious, rich tomato flavor, fresh or cooked. Long clusters on a medium-vigorous vine.



Full sun



24 - 36" spacing

Height depends on trellising

1 - 1.25" fruit



Plant outside late May



Harvest July - September



Requires trellising

Prefers medium-rich soil

Prefers 6.0 - 6.8 pH

Avoid excess nitrogen

Pruning recommended

Quantity:

(2.5" pots)



## Grape Tomato

Cannelino

D

Vigorous plants produce more fruit than foliage, and are easy to manage. Flavor is unique and sweet.



Full sun



12 - 24" spacing

3 - 4' height

1" fruit



Plant outside late May



Harvest July - August



May need staking/support

Prefers medium-rich soil

Prefers 6.0 - 6.8 pH

Avoid excess nitrogen

Quantity:

(2.5" pots)



## Heirloom Tomato

Amish Paste

I  

Flavorful, sweet, and juicy for slicing, with great meatiness for cooking down. Very few seeds.



Full sun



24 - 36" spacing

Height depends on trellising

3 - 5" fruit



Plant outside late May



Harvest August - September



Requires trellising

Prefers medium-rich soil

Prefers 6.0 - 6.8 pH

Avoid excess nitrogen

Pruning recommended

Quantity:

(2.5" pots)



## Heirloom Tomato

Black Krim

I 

Russian heirloom. Black Krim combines bold, smoky flavor and good texture with an unusual appearance. Brown/green shoulders get darker with more heat and sunlight. High yielding.



Full sun



24 - 36" spacing

Height depends on trellising

3 - 5" fruit



Plant outside late May



Harvest August - September



See growing notes for Amish Paste

Quantity:

(2.5" pots)



## Heirloom Tomato

Brandywine



One of the most flavorful tomatoes; its luscious flavor is "very rich, loud, and distinctively spicy."



Full sun



24 - 36" spacing

Height depends on trellising  
4 - 6" fruit



Plant outside late May



Harvest August - September



Requires trellising  
Prefers medium-rich soil  
Prefers 6.0 – 6.8 pH  
Avoid excess nitrogen  
Pruning recommended

**Quantity:**

(2.5" pots)



## Heirloom Tomato

Green Zebra



Succulent green fruits with sweet and zingy flavor hold up under adverse conditions and rarely crack. Fruits start out pale green with dark green stripes that soften and turn yellow when ripe.



Full sun



24 - 36" spacing

Height depends on trellising  
2 - 3" fruit



Plant outside late May



Harvest August - September



See growing notes for  
Brandywine

**Quantity:**

(2.5" pots)



## Heirloom Tomato

Striped German



The marbled interior looks beautiful sliced. Complex, fruity flavor and smooth texture.



Full sun



24 - 36" spacing

Height depends on trellising  
4 - 6" fruit



Plant outside late May



Harvest August - September



See growing notes for  
Brandywine

**Quantity:**

(2.5" pots)



## Paste Tomato

San Marzano



One of the best paste tomatoes of all time. Whole tomatoes peel easily and cook down quickly. The strain originates from Parma, Italy, where it was developed for the 1950's canning industry.



Full sun



24 - 36" spacing

Height depends on trellising  
3 - 4" fruit



Plant outside late May



Harvest August - September



See growing notes for  
Brandywine

**Quantity:**

(2.5" pots)



## Saladette Tomato

Granadero



High yields of thick-walled tomatoes with great flavor; ideal for fresh tomato sauces, salsas, and salads.



Full sun



24 - 36" spacing

Height depends on trellising

3 - 4" fruit



Plant outside late May



Harvest August - September



Requires trellising

Prefers medium-rich soil

Prefers 6.0 – 6.8 pH

Avoid excess nitrogen

Pruning recommended

**Quantity:**

(2.5" pots)



## Sauce Tomato

Speckled Roman



An elongated plum tomato with bright red skin and golden streaks. Meaty red flesh has little juice, is good for fresh eating, and cooks quickly into sauce. Excellent flavor.



Full sun



24 - 36" spacing

Height depends on trellising

3 - 5" fruit



Plant outside late May



Harvest August - September



See growing notes for

Granadero

**Quantity:**

(2.5" pots)



## Slicing Tomato

Big Beef



Big Beef tomatoes have full flavor—among the best—and ripen early for their size.



Full sun



24 - 36" spacing

Height depends on trellising

3 - 5" fruit



Plant outside late May



Harvest August - September



See growing notes for

Granadero

**Quantity:**

(2.5" pots)



## Slicing Tomato

Celebrity



Abundant, delicious and high quality tomatoes on very robust plants.



Full sun



12 - 24" spacing

3 - 4' height

3 - 4" fruit



Plant outside late May



Harvest August



May need staking/support

Prefers medium-rich soil

Prefers 6.0 – 6.8 pH

Avoid excess nitrogen

**Quantity:**

(2.5" pots)



## Slicing Tomato

Cherokee Purple



Famously rich flavor and texture make this a colorful favorite among heirloom enthusiasts.



Full sun



24 - 36" spacing

Height depends on trellising  
3 - 5" fruit



Plant outside late May



Harvest August - September



Requires trellising  
Prefers medium-rich soil  
Prefers 6.0 – 6.8 pH  
Avoid excess nitrogen  
Pruning recommended

**Quantity:**

(2.5" pots)



## Slicing Tomato

Damsel



Shares flavor qualities (sweet, rich, and tangy) with traditional pink heirlooms. Compact indeterminate plants require minimal pruning.



Full sun



24 - 36" spacing

Height depends on trellising  
3 - 5" fruit



Plant outside late May



Harvest August - September



See growing notes for  
Cherokee Purple

**Quantity:**

(2.5" pots)



## Slicing Tomato

Defiant



A high yielding, mid-size slicer with great flavor.



Full sun



12 - 24" spacing

3 - 4' height

3 - 4" fruit



Plant outside late May



Harvest July - August



May need staking/support  
Prefers medium-rich soil  
Prefers 6.0 – 6.8 pH  
Avoid excess nitrogen

**Quantity:**

(2.5" pots)



## Slicing Tomato

Estiva



High production and premium flavor. Estiva produces fully loaded trusses of fruit over a long season.



Full sun



24 - 36" spacing

Height depends on trellising  
3 - 4" fruit



Plant outside late May



Harvest August - September



See growing notes for  
Cherokee Purple

**Quantity:**

(2.5" pots)





## Slicing Tomato

Galahad

**D**

Vigorous plants with fantastic flavor.



Full sun



12 - 24" spacing  
3 - 4' height  
3 - 5" fruit



Plant outside late May



Harvest August



May need staking/support  
Prefers medium-rich soil  
Prefers 6.0 - 6.8 pH  
Avoid excess nitrogen

**Quantity:**

(2.5" pots)



## Slicing Tomato

Mountain Merit

**D**

Superior productivity and flavor,  
fruit is deep red with firm flesh.  
Excellent field holding quality and  
very reliable in variable conditions.



Full sun



12 - 24" spacing  
3 - 4' height  
3 - 4" fruit



Plant outside late May



Harvest August



See growing notes for Galahad

**Quantity:**

(2.5" pots)



# Eggplant

## Mulching Eggplants:

Eggplants prefer warm soil, which can be achieved early in the season with a dark mulch such as black plastic or landscape fabric. Other mulches may be applied once soil temperatures have warmed up, as they may limit soil's ability to warm up quickly in the spring. Mulch will also help the soil stay moist.

## Harvesting Eggplants:

Eggplants should be harvested when they are still glossy; they will become hard and dull as they age, at which point their flesh will be tougher and more bitter, with larger seeds. Clip eggplants off at the stem (a firm upward tug can sometimes work as well) but be careful of the spiky spines that some eggplants have around the stem area.

## Symbol Key



Grows well in containers



Easy to grow



Heirloom



## Eggplant

Gaudi



Prolific yielder of glossy fruits. Spineless and stress tolerant.



Full sun



18 - 24" spacing  
18 - 36" height  
6 - 8" fruit



Plant outside early June



Harvest August - September



Prefers fertile, well-drained soil  
Prefers 6.2 - 6.8 pH  
Avoid excess nitrogen  
Cover soil with dark mulch for warmth  
Pruning and staking promotes straight fruit

Quantity:

(2.5" pots)



## Eggplant

Ping Tung Long



Easy-to-grow plants yield up to 20 fruits each and are vigorous and stress tolerant. No peeling required.



Full sun



18 - 24" spacing  
18 - 36" height  
12 - 14" x 1 - 2" fruit



Plant outside early June



Harvest August - September



See growing notes for Gaudi

Quantity:

(2.5" pots)



## Eggplant

Turkish Delight



Elongated shape and minimal seeds for quick cooking and rich flavor. Prolific yields. Popular in Turkey and the Middle East. Spineless.



Full sun



12 - 24" spacing  
3 - 4' height  
8 - 10" fruit



Plant outside late May



Harvest July - August



See growing notes for Gaudi

Quantity:

(2.5" pots)



# Cucurbits (Cucumbers, Melons, Squash)

## Mulching Cucurbits:

Cucurbits prefer warm soil, which can be achieved early in the season with a dark mulch such as black plastic or landscape fabric. Other mulches may be applied once soil temperatures have warmed up, as they may limit soil's ability to warm up quickly in the spring. Mulch will also help the soil stay moist.

## Harvesting Cucurbits:

Cucurbit plants can be spiny, so be careful during harvest.

Summer squash should be checked every day or two during its harvest window, and harvested immediately once it's within the desired size range. If allowed to get too large, it will become mealy. Cucumbers should also be monitored closely, and harvested while still green and mostly rounded out (a few ridges will remain) before they become bitter. Both may be cut from the plant, leaving an inch or so of stem on the fruit.

Melons are likely ripe when the tendril nearest the fruit has died and dried up; for watermelons, this plus a dull "thud" sound when tapped means the fruit can be cut from the vine. For cantaloupes, ripe fruit can be pulled from the vine by hand; it can also be harvested slightly before this point and ripened on the counter.

Winter squash should be clipped off the vine before any hard frosts, leaving at least an inch or two of stem on the fruit. It can often be stored for months if it is sun-cured for a week or so, then stored at 50° - 60° with good ventilation and low humidity.

## Symbol Key



Heat tolerant



Drought tolerant



Heirloom



Good for canning



Good for storing



## Melon

Arava

Extra-sweet eating quality, high yields, and extended harvest.



Full sun

18" spacing  
1 – 2' high, 4 – 7' long vines  
5 - 6" fruit



Plant outside early June



Harvest August - September



Prefers southern exposure  
Prefers light, well drained soil  
Prefers 7.0 pH  
Do not water the last week before fruits are ripe  
Cover soil with dark mulch for warmth  
Harvest when fruit is yellow and comes off with a light tug

**Quantity:**  
(packs of 4)



## Melon

Halona

Dependable melon with excellent, full flavor; unusually sweet and musky.



Full sun

18" spacing  
1 – 2' high, 4 – 7' long vines  
5 - 6" fruit



Plant outside early June



Harvest August - September



Prefers southern exposure  
Prefers light, well drained soil  
Prefers 7.0 pH  
Do not water the last week before fruits are ripe  
Cover soil with dark mulch for warmth  
Harvest when fruit comes off with a light tug

**Quantity:**  
(packs of 4)



## Watermelon

Sugar Baby



The standard of small watermelons. Good flavor. Avg. 1-2 fruits/plant.



Full sun

18" spacing  
1 – 2' high, 4 – 7' long vines  
6 - 8" fruit



Plant outside early June



Harvest August - September



Prefers southern exposure  
Prefers light, well drained soil  
Prefers 6.5 – 7.5 pH  
Do not water the last week before fruits are ripe  
Cover soil with dark mulch  
Harvest when tendril nearest to fruit is brown/dead

**Quantity:**  
(packs of 4)



## Pickling Cucumber

Max Pack



Huge yields on vigorous vines. Resists bitterness under stress. Small seed cavity, dense flesh, and sweet flavor make for perfect pickles. Sustained yield over a full season.



Full sun

12" spacing  
6 – 12" high, 3 – 6' long vines  
4.5" fruit



Plant outside early - mid June



Harvest August - September



Prefers warm, well drained, fertile soil  
Prefers 6.0 – 6.8 pH  
Cover soil with dark mulch

**Quantity:**  
(packs of 4)



## Slicing Cucumber

Marketmore 76

Long, slender cucumbers stay dark green and mild-tasting even under heat stress. Plants are vigorous and highly productive.



Full sun

12" spacing  
6 - 12" high, 3 - 6' long vines  
8 - 9" fruit



Plant outside early - mid June



Harvest August - September



Prefers warm, well drained, fertile soil  
Prefers 6.0 - 6.8 pH  
Cover soil with dark mulch for warmth

**Quantity:**  
(packs of 4)



## Slicing Cucumber

Suyo Long



Great for fresh eating, pickling or cooking. Fruits are spiny when young, and smoother at maturity.



Full sun



12" spacing  
6 - 12" high, 3 - 6' long vines  
15" fruit



Plant outside early - mid June



Harvest August - September



Prefers warm, well drained, fertile soil  
Prefers 6.0 - 6.8 pH  
Cover soil with dark mulch for warmth  
Trellis to promote straight fruit

**Quantity:**  
(packs of 4)



## Summer Squash

Cousa - "Magda"



Sweet, nutty, superb flavor. Fruits can be used for stuffing, stir-fries, and pickling. Blossoms are also edible. High-yielding over a long season.



Full sun



18 - 24" spacing  
2 - 3' height  
3 - 4" fruit



Plant outside late May



Harvest July - September



Prefers well drained, fertile soil  
Prefers 5.8 - 6.8 pH  
Cover soil with dark mulch for warmth  
Pick when 3-4" long

**Quantity:**  
(packs of 4)



## Summer Squash

Yellow Zucchini - "Smooth Operator"

Plants are spineless, easy to access, quick to pick, and yield a gorgeous crop of long, slim fruit with very smooth skin.



Full sun



18 - 24" spacing  
2 - 3' height  
6 - 7" fruit



Plant outside late May

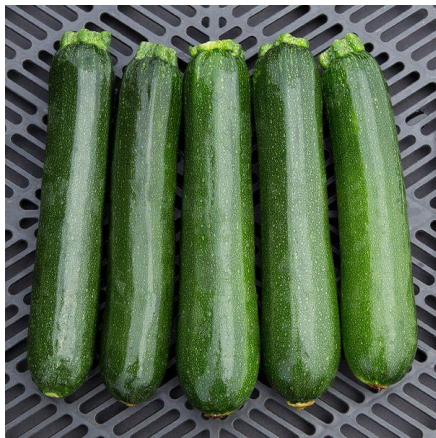


Harvest July - September



Prefers well drained, fertile soil  
Prefers 5.8 - 6.8 pH  
Cover soil with dark mulch for warmth  
Pick when 6 - 7" long

**Quantity:**  
(packs of 4)



## Summer Squash

Zucchini – “Green Machine”

Vigorous plants crank out fruits of exceptional quality over a long season.



Full sun



18 - 24” spacing  
2 - 3’ height  
7 - 8” fruit



Plant outside late May



Harvest July - September



Prefers well drained, fertile soil  
Prefers 5.8 – 6.8 pH  
Cover soil with dark mulch for warmth  
Pick when 7 - 8” long

**Quantity:**  
(packs of 4)



## Winter Squash

Acorn – “Night Shift”



High yielding plants. Squash can be stored for a few months while maintaining its intense, dark color and superior eating quality.



Full sun



24 - 36” spacing  
2 – 3’ high, 6 - 12’ long vines  
4 - 5” fruit



Plant outside late May



Harvest September - October



Prefers fertile, well drained soil  
Prefers 6.0 – 6.8 pH  
Cover soil with dark mulch for warmth  
Sun-cure harvested squash for a week then store at 50° - 60°

**Quantity:**  
(packs of 4)



## Winter Squash

Butternut – “JWS6823”



High yields of classic squash with delicious, finely textured orange flesh.



Full sun



24 - 36” spacing  
2 – 3’ high, 6 - 12’ long vines  
8 - 12” fruit



Plant outside late May



Harvest September - October



Prefers fertile, well drained soil  
Prefers 6.0 – 6.8 pH  
Cover soil with dark mulch for warmth  
Sun-cure harvested squash for a week then store at 50° - 55°

**Quantity:**  
(packs of 4)



## Winter Squash

Bush Delicata

Delicious smooth, nutty flesh with hints of butter and brown sugar. Skin starts creamy white with green stripes and flecks, curing to striped light yellow.



Full sun



18 - 24” spacing  
2 – 3’ high, 4 - 6’ wide bushes  
5 - 7” fruit



Plant outside late May



Harvest August - October



Prefers fertile, well drained soil  
Prefers 5.8 – 6.8 pH  
Cover soil with dark mulch for warmth  
Store at 50° - 55°

**Quantity:**  
(packs of 4)



## Winter Squash

Delicata – “Jester”



Superb flavor in an eye-catching fruit. High-yielding and widely adapted.



Full sun



24 - 36” spacing  
2 – 3’ high, 5 - 9’ long vines  
4 - 5” fruit



Plant outside late May



Harvest September - October



Prefers fertile, well drained soil  
Prefers 6.0 – 6.8 pH  
Cover soil with dark mulch for warmth  
Sun-cure harvested squash for a week then store at 50° - 60°



## Winter Squash

Kabocha - “Winter Sweet”



A winning combination of sweetness, flaky texture, and depth of flavor. Keeps very well and improves with storage.



Full sun



24 - 36” spacing  
2 – 3’ high, 6 - 12’ long vines  
6 - 7” fruit



Plant outside late May



Harvest September - October



Prefers fertile, well drained soil  
Prefers 6.0 – 6.8 pH  
Cover soil with dark mulch for warmth  
Sun-cure harvested squash for a week then store at 50° - 60°

**Quantity:**

(packs of 4)

**Quantity:**

(packs of 4)





# Onions

## Growing Onions:

Onions should be kept well weeded and should be watered regularly.

## Harvesting Onions:

For larger onions, thin or harvest bunches of smaller onions in early-to-mid June. In general, harvest onions at desired size by pulling straight up at the base of the onion tops. If storing onions after harvesting, pull onions from the base of the tops when they appear to be drying out and flopping over.

## Storing Onions:

When necks become soft and 50% of tops are falling over, pull and cure in well-ventilated space out of direct sunlight (to prevent greening) or sun-cure in field for 2–7 dry days before moving to dry location. Cure until tops are completely dried; about 2 weeks. When dry, clip off tops and roots and store in onion bags or shallow boxes at near freezing and 65–70% humidity.

## Symbol Key



Heat tolerant



Good for canning



Good for storing



## Onion

Ailsa Craig



Huge, sweet and mild onions. Round to teardrop-shaped bulbs with light yellow skins.



Full sun



4 - 6" spacing  
10 - 30" height  
5 - 6" bulbs



Plant outside mid May



Harvest July - September



Prefers rich, well drained soil  
Prefers 6.2 - 6.8 pH  
Harvest at desired size

**Quantity:**  
(packs of 6)



## Onion

Red Carpet



Magnificent magenta interior rings; an especially gorgeous red onion.



Full sun



4 - 6" spacing  
10 - 30" height  
3 - 4" bulbs



Plant outside mid May



Harvest July - September



Prefers rich, well drained soil  
Prefers 6.2 - 6.8 pH  
Harvest at desired size; or if storing, pull when tops dry and flop over; cure outside 3-5 days, then cool slowly and store at near freezing temperature

**Quantity:**  
(packs of 6)



## Onion

Red Long of Florence



Gorgeous bottle-shaped bulbs with brilliant red coloring. Preferred by culinary enthusiasts for easy kitchen prep and mild, sweet flavor; great for pickling and using raw in salads.



Full sun



2 - 4" spacing  
10 - 30" height  
4 - 6" bulbs



Plant outside mid May



Harvest July - September



Prefers rich, well drained soil  
Prefers 6.2 - 6.8 pH  
Harvest at desired size; can be harvested small for bunching

**Quantity:**  
(packs of 6)



## Onion

Sedona



Spanish globe variety produces large bulbs with attractive rosy-brown skins. High yields.



Full sun



4 - 6" spacing  
10 - 30" height  
3 - 4" bulbs



Plant outside mid May



Harvest July - September



See growing notes for Red Carpet onions

**Quantity:**  
(packs of 6)



## Onion

Talon



Stunning round, rock-hard globes with pretty golden skin and a beautiful clean white interior.



Full sun



4 - 6" spacing  
10 - 30" height  
3 - 4" bulbs



Plant outside mid May



Harvest July - September



See growing notes for Red Carpet onions

**Quantity:**

(packs of 6)



# Other Vegetables

## Growing Vegetables:

Consistent watering can make a difference in preventing splitting or nutrient deficiencies in many crops. Aim for 1" of water per week, allowing soil to drain fully between waterings.

## Harvesting Greens:

Leafy greens can typically be harvested at whatever size is desired; if harvesting large leaves for a bunch, select the outer leaves to cut and leave the center leaves to regrow. If harvesting smaller leaves, the whole plant can be cut just above the ground. It may regrow but will likely have lesser quality.

## Symbol Key



Cold tolerant



Stores well



Easy to grow



Good for sauces / canning



Heirloom



## Beets

Boro



Widely adapted and reliable. Smooth, rich red skin and excellent flavor.



Full sun



3" spacing  
3" roots



Plant outside mid May



Harvest June - July



Prefers light, loamy soils  
Prefers 6.2 - 6.8 pH  
Prefers deeply cultivated raised beds  
Pull at desired size, cut tops, wash, and store up to 6 months at 32°F and 95% humidity.

**Quantity:**  
(packs of 6)



## Beets

Chioggia



Medium-height tops are green with pink-striped stems. Excellent flavor.



Full sun



3" spacing  
3" roots



Plant outside mid May



Harvest June - July



Prefers light, loamy soils  
Prefers 6.2 - 6.8 pH  
Prefers deeply cultivated raised beds  
Pull at desired size, cut tops, wash, and store up to 6 months at 32°F and 95% humidity.

**Quantity:**  
(packs of 6)



## Beets

Formanova



Healthy, upright, and vigorous tops with neat and clean cylindrical roots. Great canning beet.



Full sun



3" spacing  
3" roots



Plant outside mid May



Harvest June - July



Prefers light, loamy soils  
Prefers 6.2 - 6.8 pH  
Prefers deeply cultivated raised beds  
Pull at desired size, cut tops, wash, and store up to 6 months at 32°F and 95% humidity.

**Quantity:**  
(packs of 6)



## Bok Choi

Bopak



Compact plants hosting densely growing, brilliant green leaves on striking white stems. Mild, succulent flavor.



Full sun



6" spacing  
15 - 18" tall



Plant outside mid May



Harvest July



Harvest at desired size by cutting entire plant at the base

**Quantity:**  
(packs of 4)





## Broccoli

BC1611

Stems are tender with few leaves. Beautiful bright green color and head shape. Strong plant.



Full sun



6 - 12" spacing  
Up to 8" long florets



Plant outside mid May



Harvest June - July



Prefers well drained, fertile soil  
Prefers 6.0 – 7.5 pH  
Before flower buds open, cut 4 – 8" stems of central head and side shoots. Harvest regularly to encourage continued production.

**Quantity:**

(packs of 4)



## Broccoli

Covina

Upright, large-framed plants produce big, tightly beaded heads for reliable harvests.



Full sun



18 - 24" spacing  
6 – 8" heads



Plant outside mid May



Harvest July - August



Prefers well drained, fertile soil  
Prefers 6.0 – 7.5 pH  
Ensure sufficient boron  
Cut head when still tightly beaded, including a few inches of stem

**Quantity:**

(packs of 4)



## Cabbage

Faroo

Attractive deep green, 3 lb. heads are filled with tender, thin, crisp, peppery-sweet leaves.



Full sun



10 - 18" spacing  
6 – 7" heads



Plant outside mid May



Harvest July - August



Prefers well drained, fertile soil  
Prefers 6.5 - 7.5 pH  
Remove large outer leaves and cut off of stem at base of head to harvest

**Quantity:**

(packs of 4)



## Cabbage

Napa "Rubicon"



Full-size for cooking and kimchi. The flavor is sweet, tangy, juicy, and delicious!



Full sun



12-18" spacing  
11" heads



Plant outside mid May



Harvest July



Prefers well drained, fertile soil  
Prefers 6.5 - 7.5 pH  
Harvest when heads are very firm  
Stores 1 – 2 months at near freezing temperatures

**Quantity:**

(packs of 4)



## Cabbage

Tiara



Early maturing, dense mini cabbage suited for successions and tight planting spaces.



Full sun



12 - 18" spacing  
5 - 6" heads



Plant outside mid May



Harvest July - August



Prefers well drained, fertile soil  
Prefers 6.5 - 7.5 pH  
Remove large outer leaves and cut off of stem at base of head to harvest

**Quantity:**

(packs of 4)



## Kale

Red Russian



Smooth, green, purple-veined leaves, perfect for salads and light cooking.



Full sun



12 - 18" spacing  
24 - 36" tall



Plant outside mid May



Harvest July



Prefers well drained, fertile soil  
Prefers 6.0 - 7.5 pH  
Break or cut off outer leaves at desired length

**Quantity:**

(packs of 6)



## Kale

Westlandse



A vigorous producer with attractive blue-green leaves.



Full sun



12 - 18" spacing  
24 - 36" tall



Plant outside mid May



Harvest July - August



Prefers fertile, well drained soil  
Prefers 6.0 - 7.5 pH  
Break or cut off outer leaves at desired length

**Quantity:**

(packs of 6)



## Lettuce

Alkindus (Red Butter)

Uniform red butterhead with red outer leaves and a beautiful bright green heart.



Full sun



8 - 12" spacing  
7 - 9" heads



Plant outside mid May



Harvest June - July



Prefers cool, well drained, loose soil  
Prefers 6.2 - 6.8 pH  
Do not allow any leaves to be buried in soil when planting  
Cut entire plant at base to harvest

**Quantity:**

(packs of 6)



## Lettuce

Bauer

Heads are uniform and dense. Full of tender, sweet and dark green leaves.



Full sun



8 - 12" spacing  
8 - 10" heads



Plant outside mid May



Harvest June - July



Prefers cool, well drained, loose soil  
Prefers 6.2 - 6.8 pH  
Do not allow any leaves to be buried in soil when planting  
Cut entire plant at base to harvest

**Quantity:**  
(packs of 6)



## Lettuce

Bergam's Green

Uniform, dense heads are high-yielding with good flavor.



Full sun



8 - 12" spacing  
8 - 10" heads



Plant outside mid May



Harvest July



Prefers cool, well drained, loose soil  
Prefers 6.2 - 6.8 pH  
Do not allow any leaves to be buried in soil when planting  
Cut entire plant at base to harvest

**Quantity:**  
(packs of 6)



## Lettuce

Saladin (Iceberg)

Thick, crispy leaves that are sweet and refreshing, offering a classic iceberg taste.



Full sun



8 - 12" spacing  
5 - 6" heads



Plant outside mid May

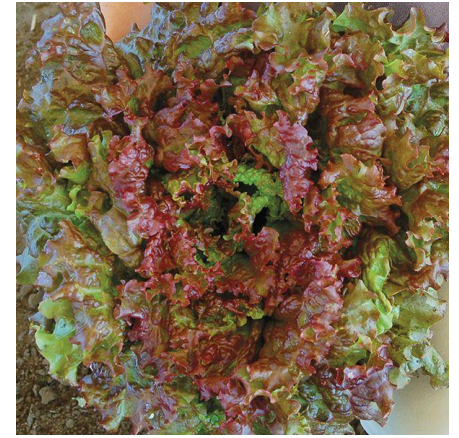


Harvest July



Prefers cool, well drained, loose soil  
Prefers 6.2 - 6.8 pH  
Do not allow any leaves to be buried in soil when planting  
Cut entire plant at base to harvest

**Quantity:**  
(packs of 6)



## Lettuce

Vulcan

Ruffled, red leaf lettuce with colorful crisp heads. Early maturing with heat and disease tolerance.



Full sun



8 - 12" spacing  
8 - 10" heads



Plant outside mid May



Harvest July



Prefers cool, well drained, loose soil  
Prefers 6.2 - 6.8 pH  
Do not allow any leaves to be buried in soil when planting  
Cut entire plant at base to harvest

**Quantity:**  
(packs of 6)





## Popcorn

Tap Dancer

Gorgeous popcorn with yellow, purple and white kernel coloration.



Full sun



10-12" spacing  
9-10' height  
6.5" ears



Plant outside late May



Harvest September - October



Requires deep, well-drained fertile soils  
Prefers 6.0-6.8 pH  
May need support from organic compost or a complete fertilizer

**Quantity:**

(packs of 6)



## Spinach

Space



Vigorous, all season spinach with thick, glossy leaves that are smooth to slightly savoyed.



Full sun



2" spacing  
2 - 5" leaves



Plant outside mid May



Harvest June



Prefers cool, moist soil  
Prefers 6.0-7.5 pH  
Cut entire plant to ground for harvest

**Quantity:**

(packs of 6)



## Swiss Chard

Bright Lights



Savoyed leaves with gold, pink, orange, red, and white stems. Flavor is milder than ordinary chard.



Full sun



4 - 6" spacing  
1 - 2' leaf length



Plant outside late May



Harvest July



Prefers loose, well drained soil  
Prefers 6.2 - 6.8 pH  
Break or cut off outer leaves at desired length

**Quantity:**

(packs of 6)