



To support the campaign to save Millborn Farm, as well as to find more information on the property, upcoming campaign events, and a photo gallery, visit thetrustees.org/savemillborn



MILLBORN FARM | 63 BULLARD STREET | SHERBORN, MA 01770

ALL PHOTOS ©KRISTA PHOTOGRAPHY



THE CAMPAIGN TO
**Save
Millborn
Farm**

An unprecedented opportunity to preserve and steward critical open space in the Charles River Valley



In a region where The Trustees has a deep connection to the community, Millborn Farm will provide residents and visitors with a unique refuge to experience nature's splendor.



The Opportunity

Situated on 180+ acres in the towns of Sherborn and Millis in the heart of the Charles River Valley, Millborn Farm is unlike any other property in the area. An intimate tree-lined entrance leads to an expansive open landscape of stonewall-lined hay fields, forestland, farm lanes, and more than a mile of waterfront along the Charles River, Bogastow Brook and South End Pond. Trails meander through fields and forest and around floodplain habitat along the water's edge. Few places boast this combination of stunning landscape features and resources.

The Trustees has been presented with an unprecedented opportunity to acquire Millborn Farm—to protect the land from the potential for development, to provide precious space for people to engage with nature, and to preserve its legacy and significant environmental value.

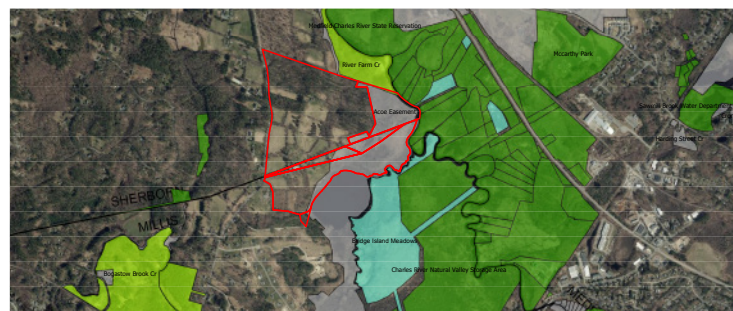
Creating The Trustees' newest reservation at Millborn Farm will be a monumental achievement for land conservation and outdoor recreation supporters across the state.

Why The Trustees

The Trustees is Massachusetts' largest, and the nation's first, conservation and preservation nonprofit. The organization owns and manages more than 120 unique properties across the state—from working farms and public gardens, to community parks, barrier beaches, historic houses, museums, and more—and welcomes more than 2 million visitors to its properties every year. The Trustees has the experience and expertise to protect Millborn Farm in perpetuity and to realize its full potential as a special place for outdoor enjoyment.

With a long history and significant presence in the Charles River Valley, The Trustees protects more than 2,600 acres across 17 diverse and dynamic properties, including its first

reservation, Rocky Narrows, acquired in 1897. A strong demand exists for outdoor recreation opportunities in the area; some of The Trustees most-visited properties are located here. In a region where The Trustees has a deep connection to the community, Millborn Farm will provide residents and visitors with a unique refuge to experience nature's splendor.



A bird's eye view of the Millborn Farm property and the surrounding Trustees properties and conservation land.

Property Resources

Millborn Farm provides a unique opportunity to protect the Charles River and its watershed, manage farmland and grassland habitat, and ensure aquatic and upland habitat connectivity, while providing unparalleled recreation experiences.

Protection of the river floodplain is critically important in a time of increased flooding due to climate change. With over one mile of waterway frontage, Millborn Farm provides essential storage for flood waters as well as protects critical wildlife habitat. The farm's land also includes 75 acres of productive hay fields and grasslands that support native pollinators, plants,

and wildlife. 139 species of birds have been documented at Millborn Farm and it is believed there is the potential to be as many as 50 more that frequent the property.

Notably, the addition of Millborn Farm to the Trustees portfolio will connect it via navigable water to nine other Trustees reservations: Cedariver in Millis and Shattuck Reservation in Medfield to the south, Bridge Island Meadows to the east across South End Pond, and Rocky Narrows (Sherborn), Medfield Meadow Lots (Medfield), Peters Reservation (Dover), and Charles River Peninsula (Needham) to the north all about the Charles River. Further, hiking trails from Shattuck Reservation connect to Noon Hill Reservation (Medfield) and those from Peters Reservation connect to Chase Woodlands (Dover).

The Vision for Millborn Farm

Millborn Farm will be open to the public for self-guided exploration and passive recreation, including bird watching, hiking, horseback riding, and snowshoeing. Visitors can explore the trails through the lush fields and forests and along the water's edge. The ecological diversity, access to water, open fields, and safe entry and exit away from the road all provide ideal spaces for families to explore and learn about the natural world while having fun outdoors.

Initial work to activate the reservation will include:

- creation of a parking area
- clearing, grading, and maintenance of trails
- a visitor kiosk and installation of wayfinding signage
- maintaining existing equestrian use of Millborn Farm, including with the Norfolk Hunt Club

The multi-year plan for revitalizing the property also includes future additional engagement and experiential educational opportunities such as immersive guided experiences, as well as school partnerships and field trips, based on community needs and interests. Potential repurposing of existing buildings will be considered to support these initiatives. Given the extensive frontage along bodies of water, engagement staff will collaborate with Trustees ecologists to determine how best to provide water access, which could include a boardwalk, viewing platform, kayak launch, or managed shoreline access.

DEADLINE: December 31, 2023

The Trustees acknowledges that Millborn Farm is part of the ancestral homeland of the Nipmuc tribe. Staff will integrate this acknowledgment into planning as the organization strives to be more inclusive in stewarding Massachusetts landscapes for the public's use and enjoyment.

The Challenge

The Trustees must raise \$14.4 million by December 31, 2023 to acquire, protect, and maintain Millborn Farm as a reservation in perpetuity. The total to be raised includes:

Acquisition and Transaction Expenses:	\$10,212,500
Reservation Activation Costs*:	1,946,885
Endowment for Long Term Care:	2,237,500

TOTAL COSTS: \$14,396,885

*Includes parking area, trails, signage, stabilizing buildings, creating water access, ecological and cultural resources research, and other activities to create a safe and welcoming Trustees reservation.



A map showing the potential for a maximum 40-lot development if a conservation outcome is not achieved for Millborn Farm.

Your Support is Requested!

For more information on the vision for Millborn Farm, or to learn how to support the effort, contact Trustees Chief of Development Ed Wilson at ewilson@thetrustees.org.

