

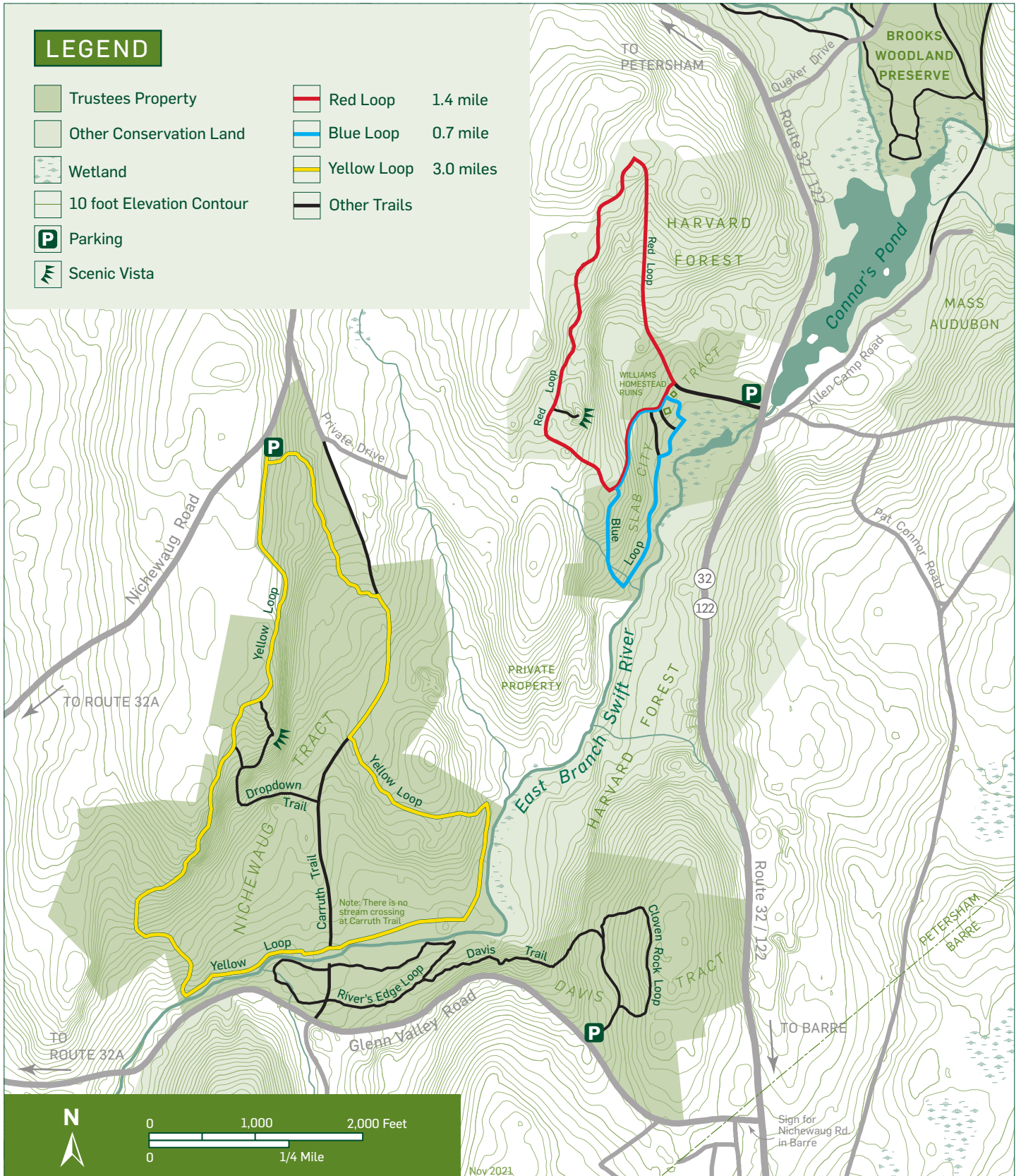


# SWIFT RIVER RESERVATION (439 ACRES)

Route 32 / 122 ▪ Nichewaug Road ▪ Glen Vally Road ▪ Petersham, MA  
978.921.1944 ▪ info@thetrustees.org ▪ www.thetrustees.org

## LEGEND

- Trustees Property
- Other Conservation Land
- Wetland
- 10 foot Elevation Contour
- Parking
- Scenic Vista
- Red Loop 1.4 mile
- Blue Loop 0.7 mile
- Yellow Loop 3.0 miles
- Other Trails



Source data obtained from USGS topographic maps, field surveys, Global Positioning System (GPS), and data provided by MassGIS. Boundary lines and trail locations are approximate. This map is a product of the Geographic Information System of The Trustees of Reservations, November 2021.



Nov 2021